

MAIN LOG

ECLIPS 6.0p Feb 21, 2008
Updates: 1

Mon Oct 5 20:22:35 2009

Pcrplt /main/62

Cplot

Pdf_Cpp /main/16

Fileview 5.42

PARAMETER AND FILTER SUMMARY REPORT

File: /data/pass/vul_2/k970a05.prm
LOGGING MODE: DEPTH DIRECTION: UP
TOP DEPTH: 1992.052 m BOTTOM DEPTH: 3556.635 m

SYMMETRIC FILTER

MEASUREMENT TYPE	PARAMETER	VALUE	UNITS	INTERVAL (m)	
CHT	FILTER ()	medium (1)		TOP	BOTTOM
GR MED RES	FILTER ()	medium (1)		''	''
TENSION	FILTER ()	medium (1)		''	''
SP-SPDH	FILTER ()	medium (1)		''	''

BOREHOLE & CEMENT

MEASUREMENT TYPE	PARAMETER	VALUE	UNITS	INTERVAL (m)	
X-Y COMBINED CALIPER PROCESSING-FOCM5Y	Caliper - FOCUS	Average		TOP	BOTTOM
BIT SIZE	BIT SIZE	215.000	mm	''	''
BOREHOLE CORR DIAMETER SOURCE	CALIPER/FIXED DIA. (mbh*)	USE CALIPER		''	''
BOREHOLE CORR DIAMETER	FIXED DIAMETER (mbh*)	215.000	mm	''	''
BH MUD RESISTIVITY SOURCE	RMUD SOURCE (HDIL)	TOOL MEASURED		''	''
MUD SAMPLE RESISTIVITY	MUD SAMPLE TEMP	25.0	degC	''	''
	MUD SAMPLE RES	1.000	ohm.m	''	''
BOREHOLE TEMP from GRADIENT	Known BH REF TEMP	25.0	degC	''	''
	at BH REF DEPTH	0.0	m	''	''
	with TEMP GRADIENT	2.187	0.01 degC/m	''	''

ACCELERATION PROCESSING

MEASUREMENT TYPE	PARAMETER	VALUE	UNITS	INTERVAL (m)	
ACCEL CORR SWITCH	ACCEL DEPTH CORR	CORRECTION ON		TOP	BOTTOM

HDIL PROCESSING

MEASUREMENT TYPE	PARAMETER	VALUE	UNITS	INTERVAL (m)	
HDIL TEMPERATURE CORRECTION	TEMP CORRECTION	ON		TOP	BOTTOM
ADAPTIVE BOREHOLE CORRECTION	ABC PROCESSING	ON		''	''
	ABC to CALCULATE	STANDOFF		''	''
	STANDOFF	38.10	mm	''	''
	TOOL POSITION	ECCENTERED		''	''
	Rmud MULTIPLIER	1.000		''	''

CURVE DESCRIPTION REPORT

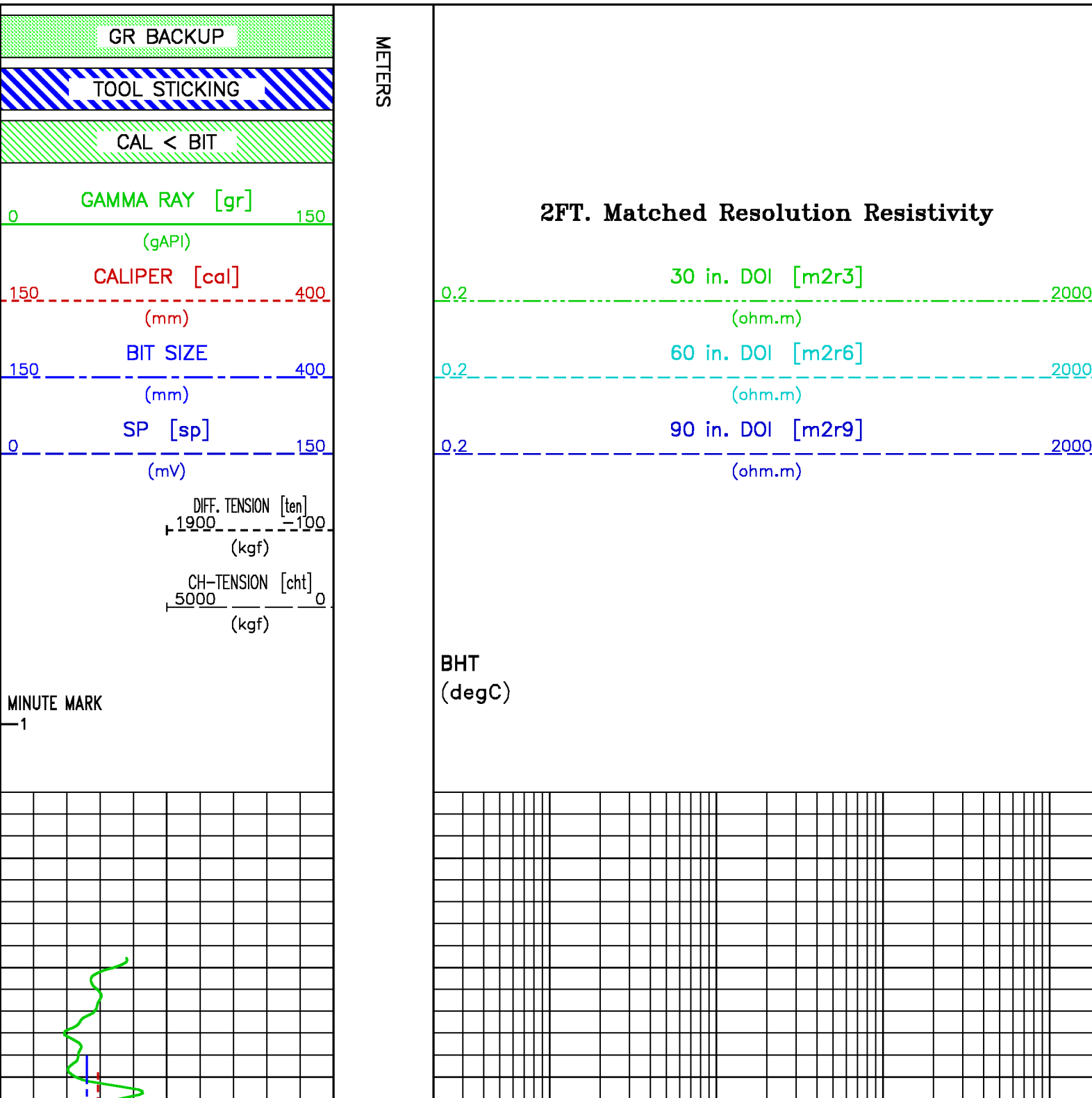
CURVE NAME	CURVE ALIAS	CREATION DATE	CURVE DESCRIPTION	
F1:BIT	BIT	Oct 5 15:23:56 2009	BIT SIZE	
F1:CAL	CAL	Oct 5 15:23:56 2009	CALIPER	
F1:CHT	CHT	Oct 5 15:23:56 2009	CABLE HEAD TENSION	
F1:GR	GR	Oct 5 15:23:56 2009	GAMMA RAY	
F1:M2R3	M2R3	Oct 5 15:23:56 2009	VERT RESOLUTION MATCHED (2 FT) RES - DOI 30 INCH	
F1:M2R6	M2R6	Oct 5 15:23:56 2009	VERT RESOLUTION MATCHED (2 FT) RES - DOI 60 INCH	
F1:M2R9	M2R9	Oct 5 15:23:56 2009	VERT RESOLUTION MATCHED (2 FT) RES - DOI 90 INCH	
F1:MDTMP		Oct 5 15:23:56 2009	MUD TEMPERATURE	
F1:MMRK	MMRK	Oct 5 15:23:56 2009	MINUTE MARK	
F1:SP	SP	Oct 5 15:23:56 2009	SPONTANEOUS POTENTIAL	
F1:TEN	TEN	Oct 5 15:23:56 2009	DIFFERENTIAL TENSION	

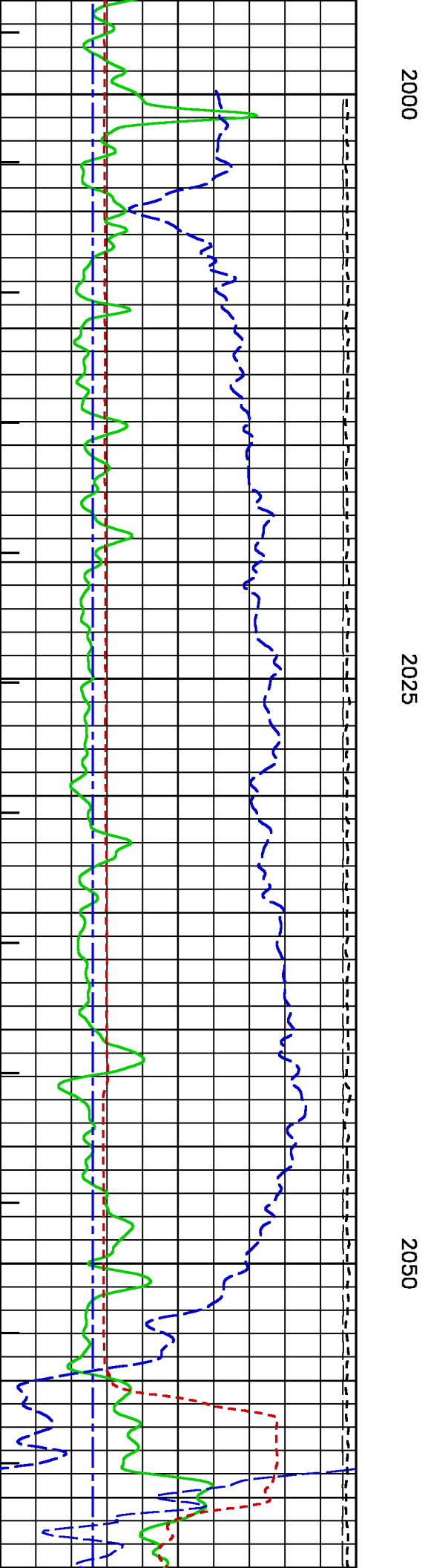
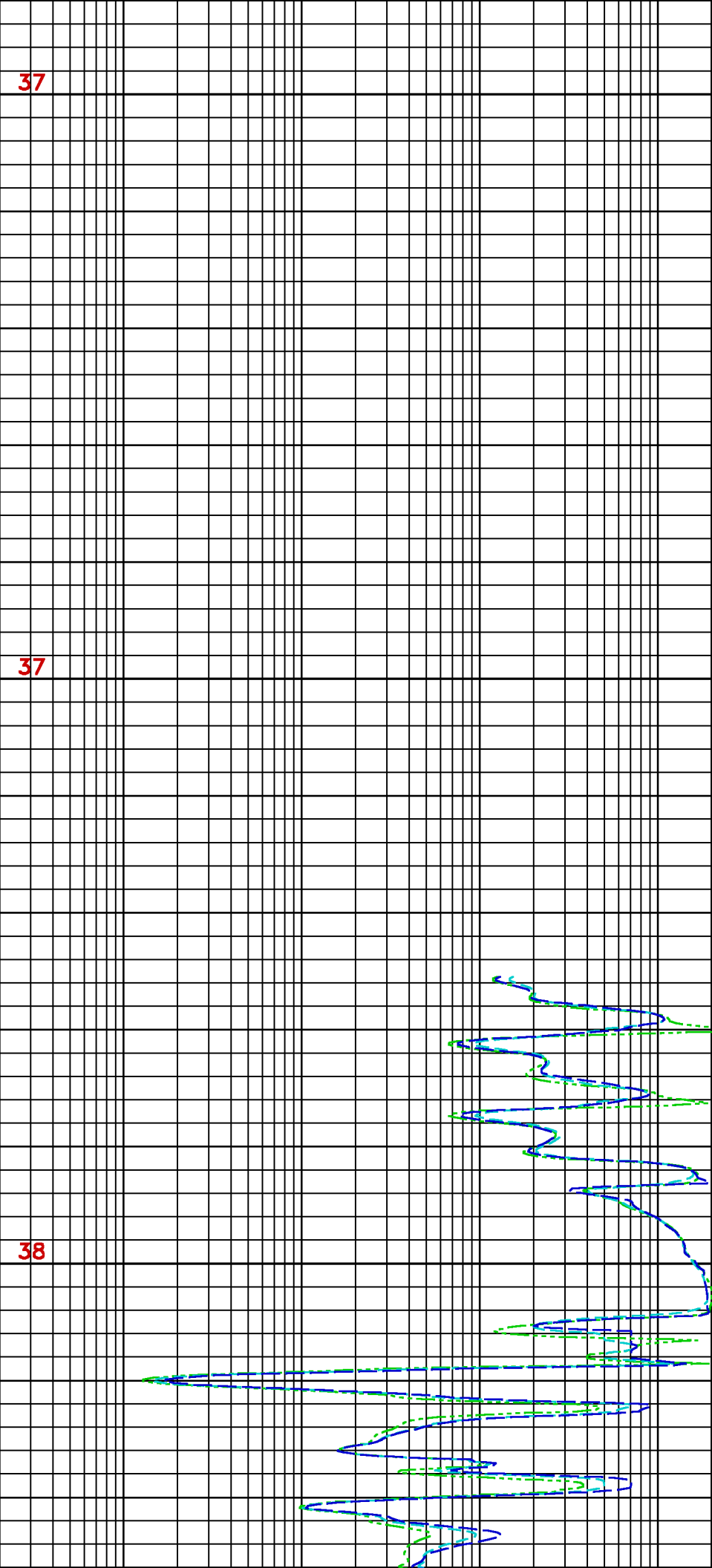
CURVE MEASURE POINT OFFSET

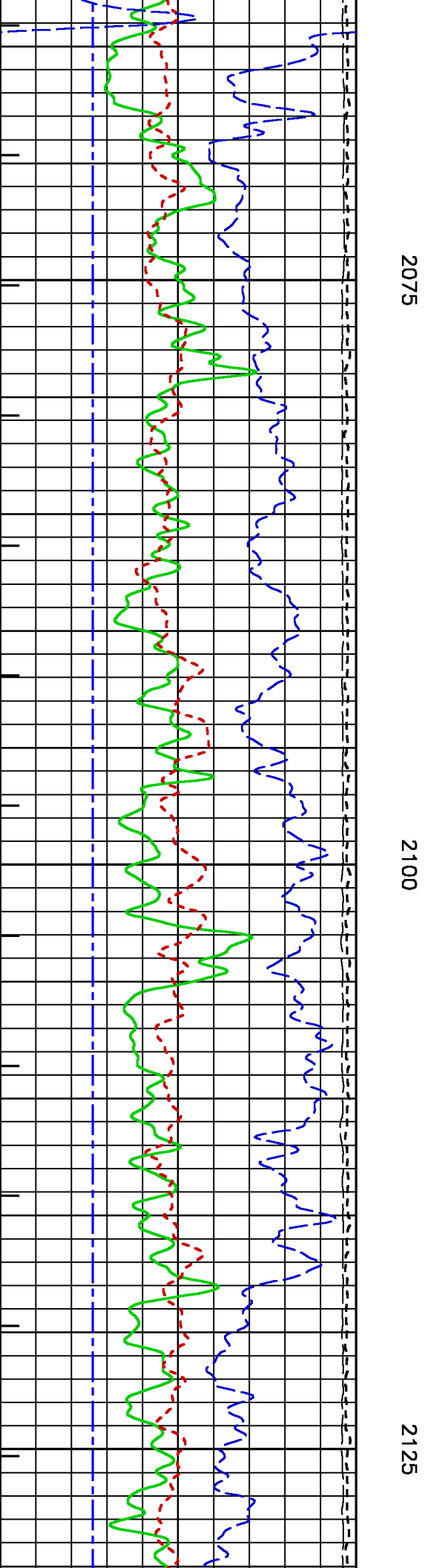
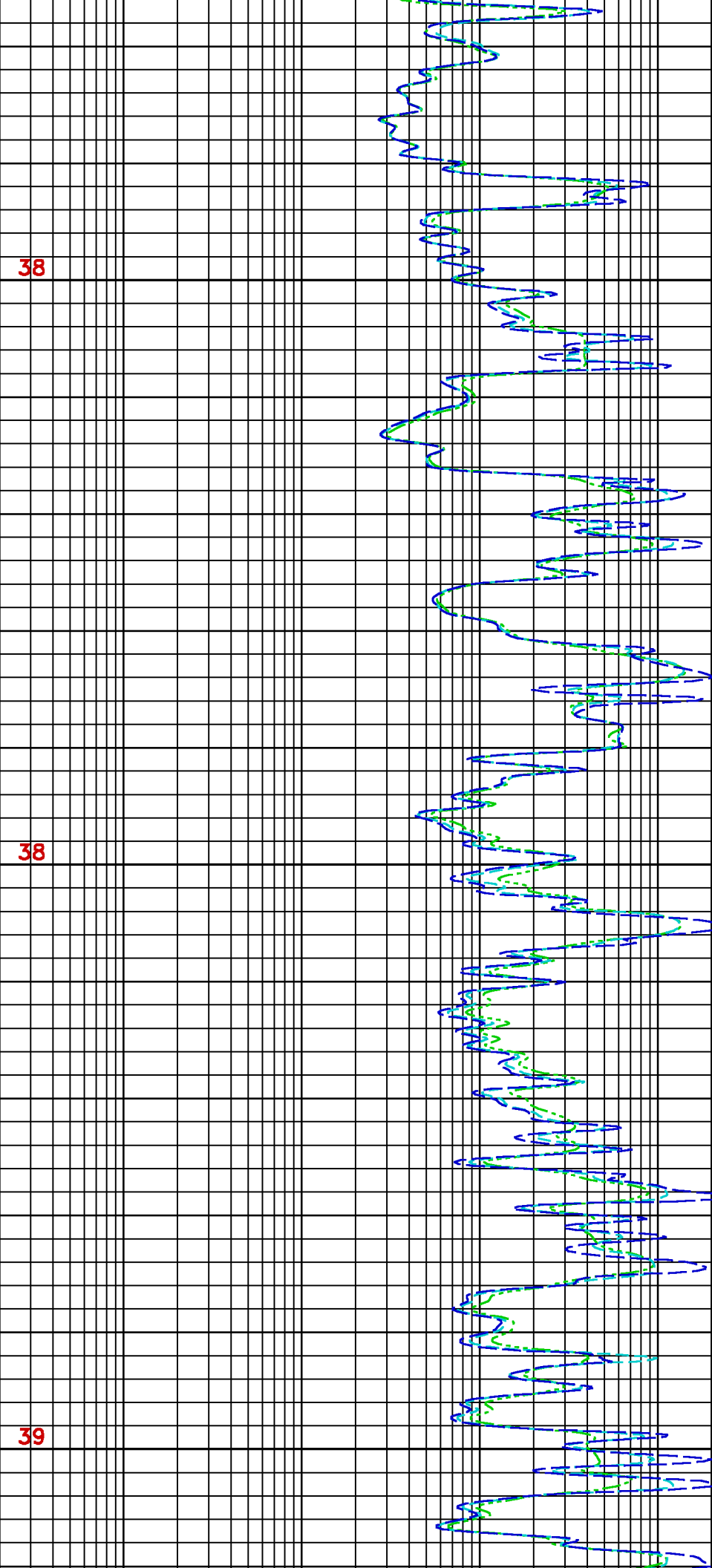
CURVE	OFFSET (m)	CURVE	OFFSET (m)	CURVE	OFFSET (m)	CURVE	OFFSET (m)
BIT	0.00	GR	10.67	M2R9	0.84		
CAL	5.52	M2R3	0.84	SP	0.38		
CHT	0.00	M2R6	0.84	TEN	0.00		

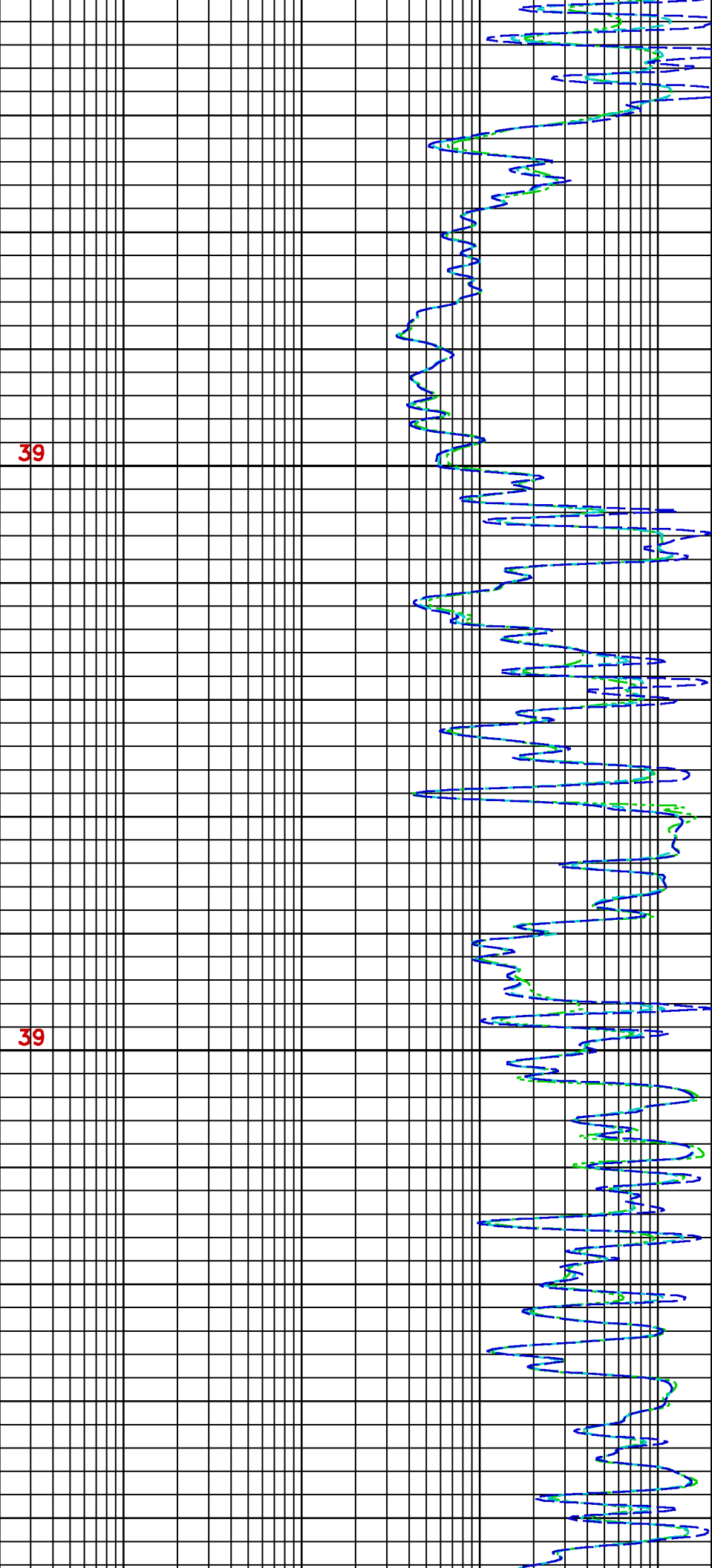
Presentation : cpu1:/dat1a/pass/vul_2/rush_fhdil_main.pdf [1:240 Scale]
 Plot Interval : 1982.95 - 3563.04 Meters

Data File 1 : F1 : cpu1:/dat1a/pass/vul_2/r2t2_main.xtf
 Created On : Oct 5 15:23:56 2009
 Company : VULCAN MINERALS INC.
 Well : VULCAN INVESTCAN ROBINSONS #1
 Field : UNDEFINED
 File Interval : 1982.95 - 3563.04 Meters
 Oct : k970a



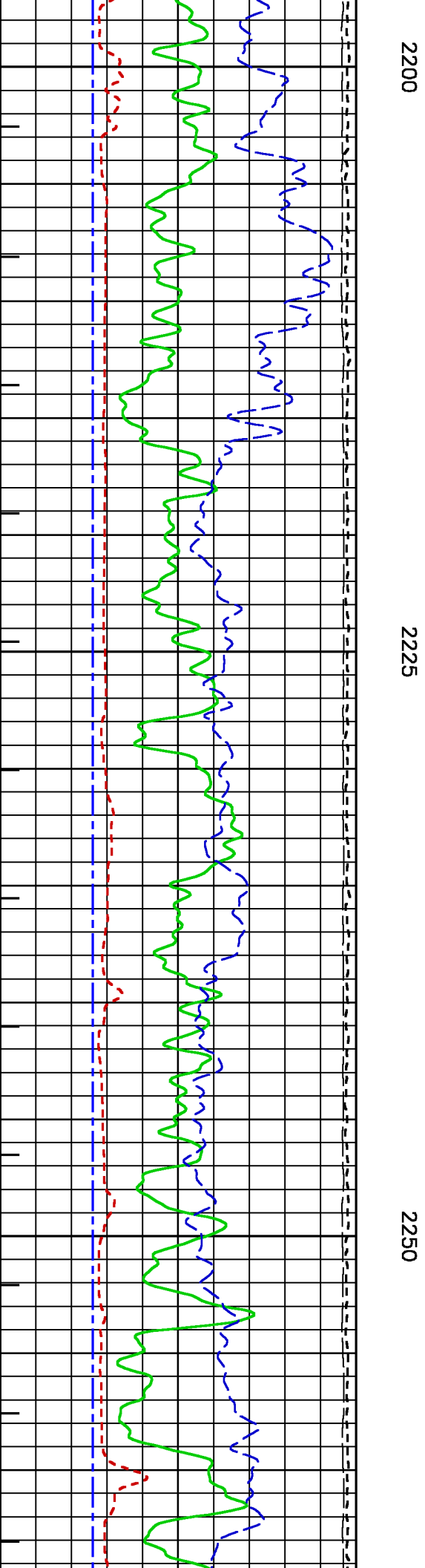
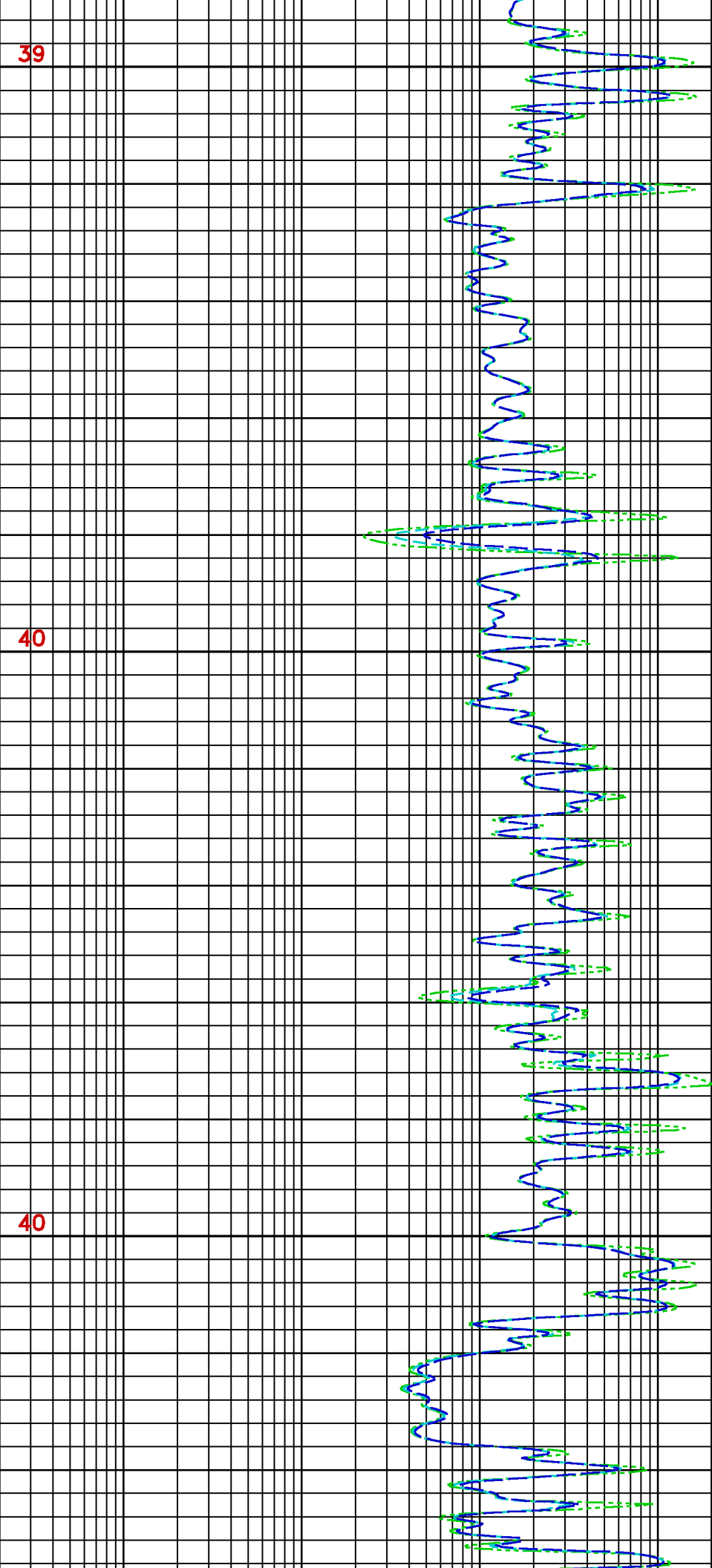


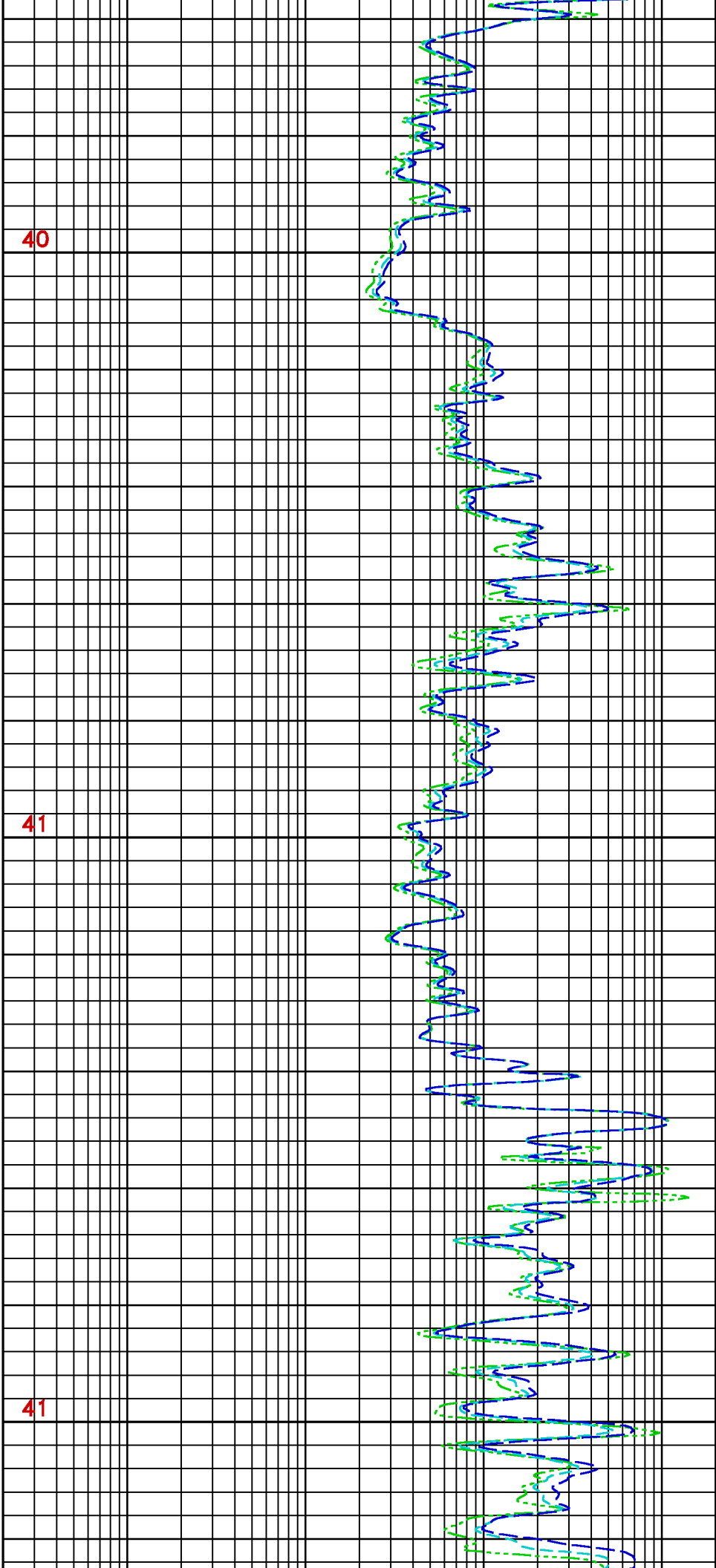




2150

2175

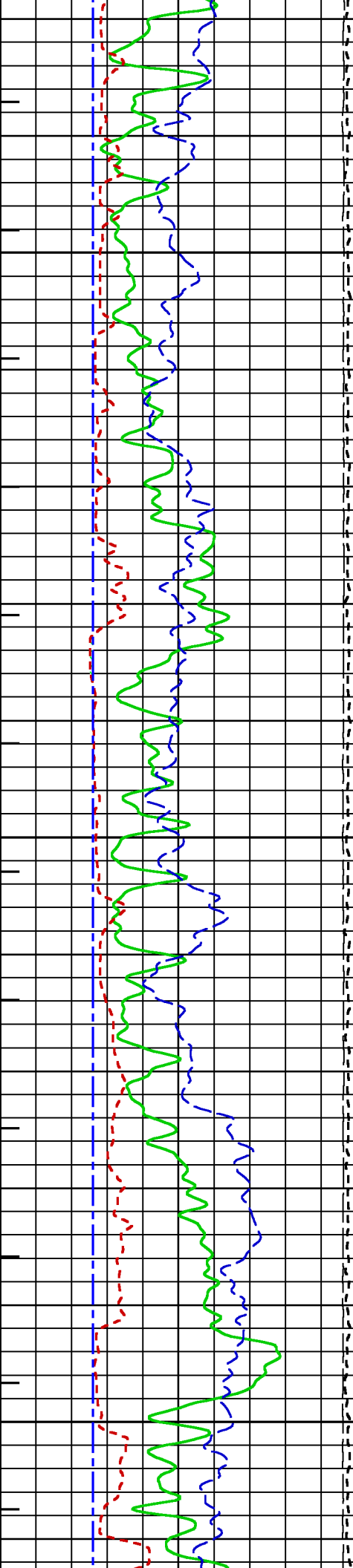


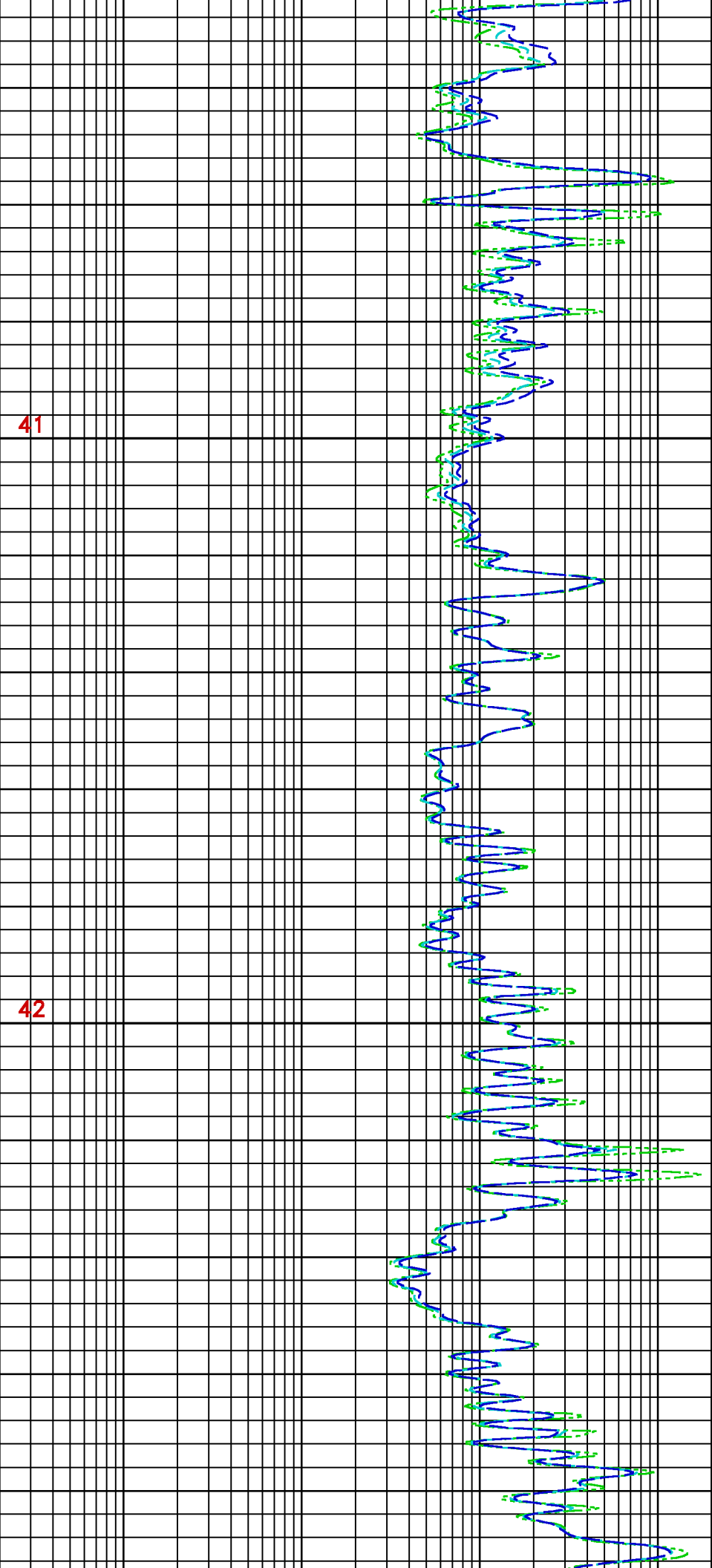


2275

2300

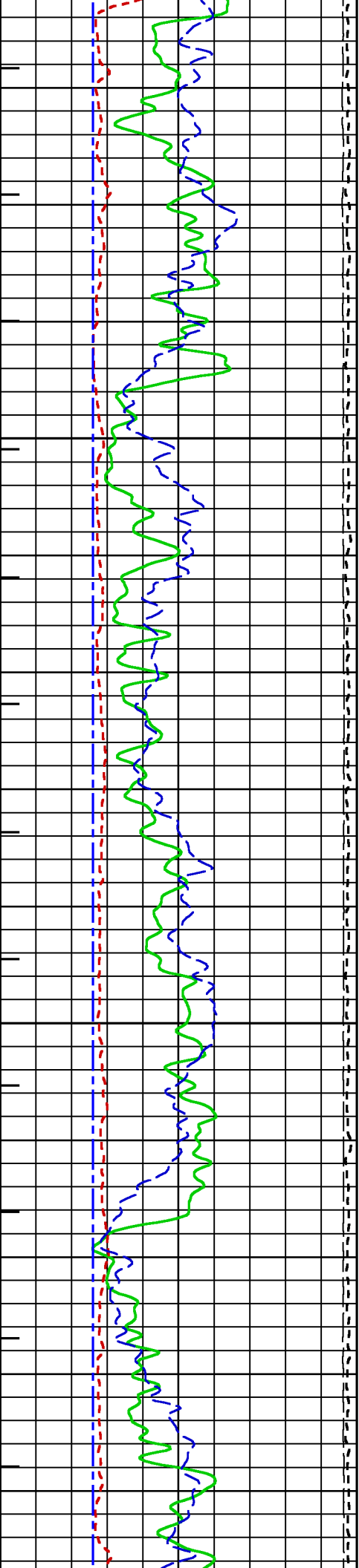
2325

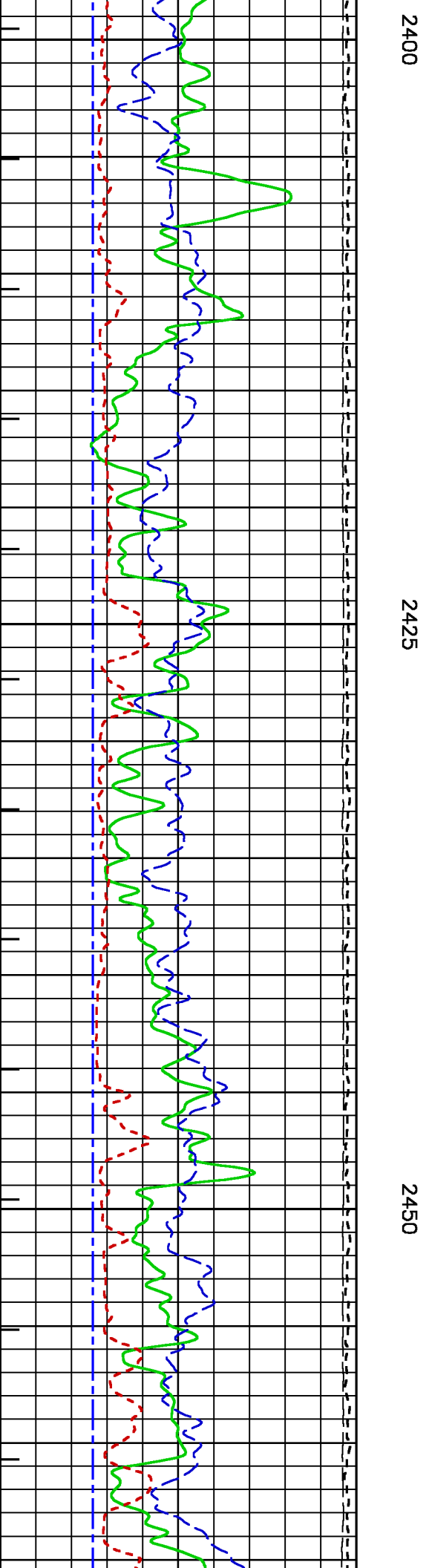
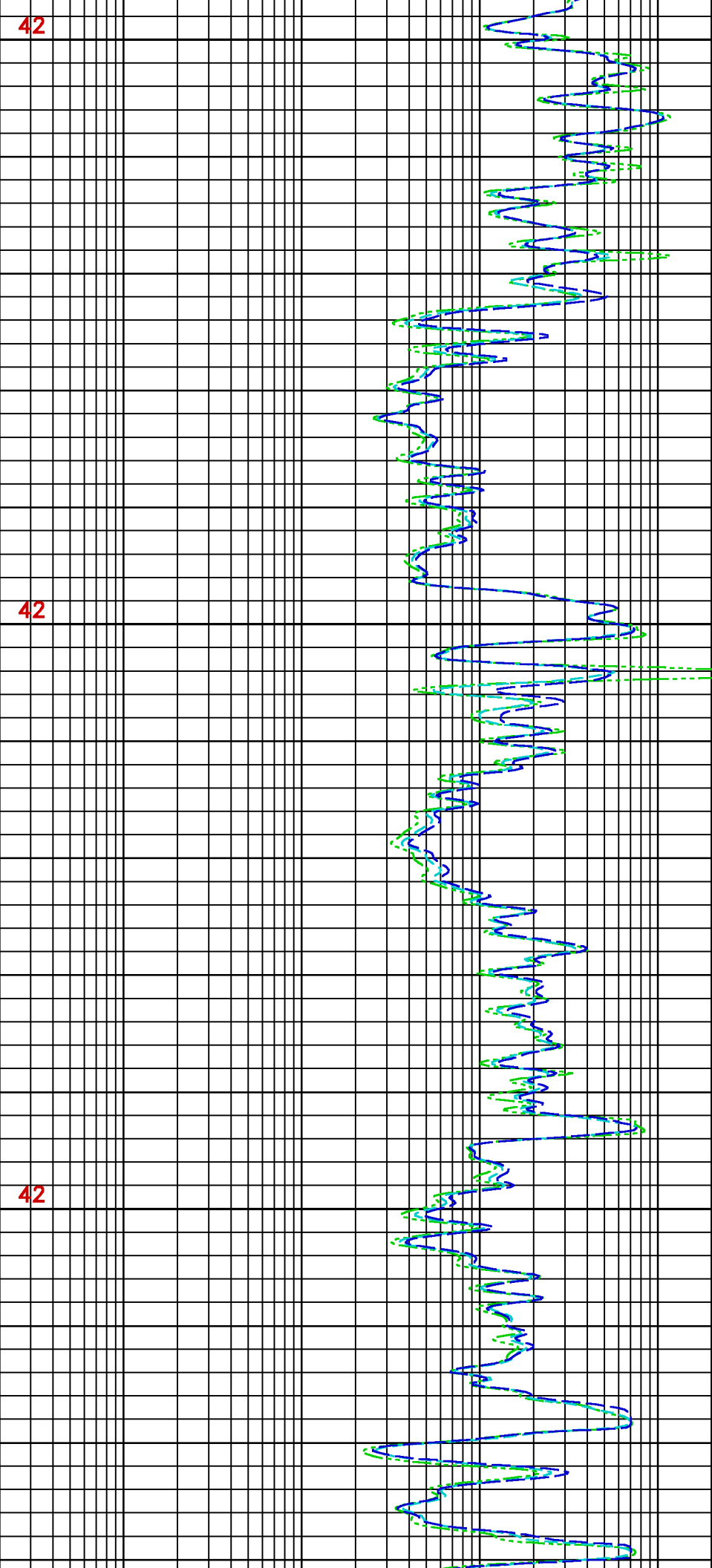


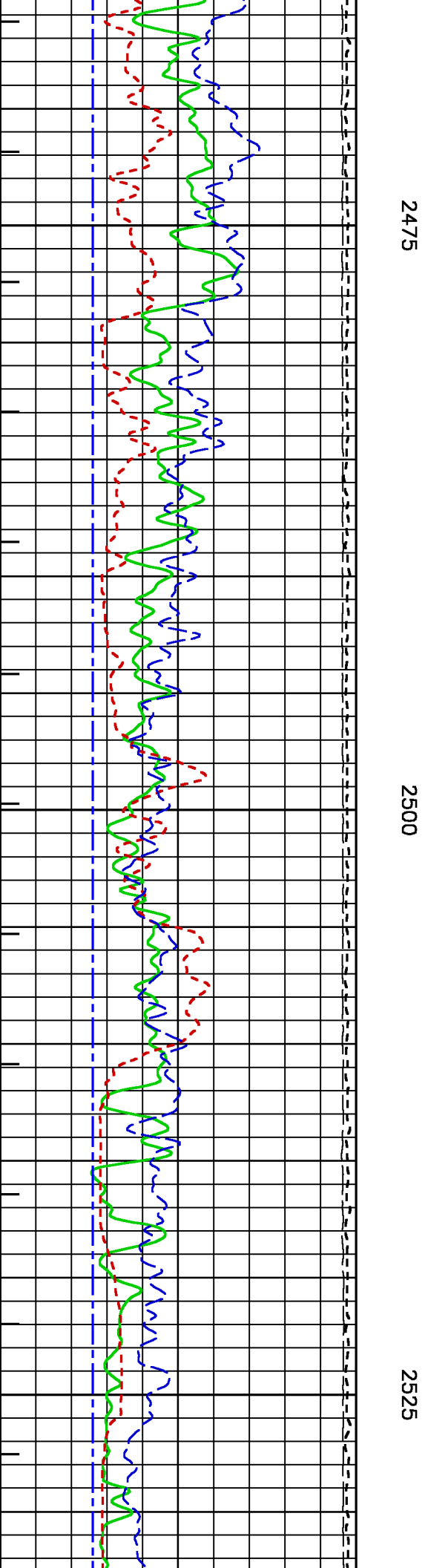
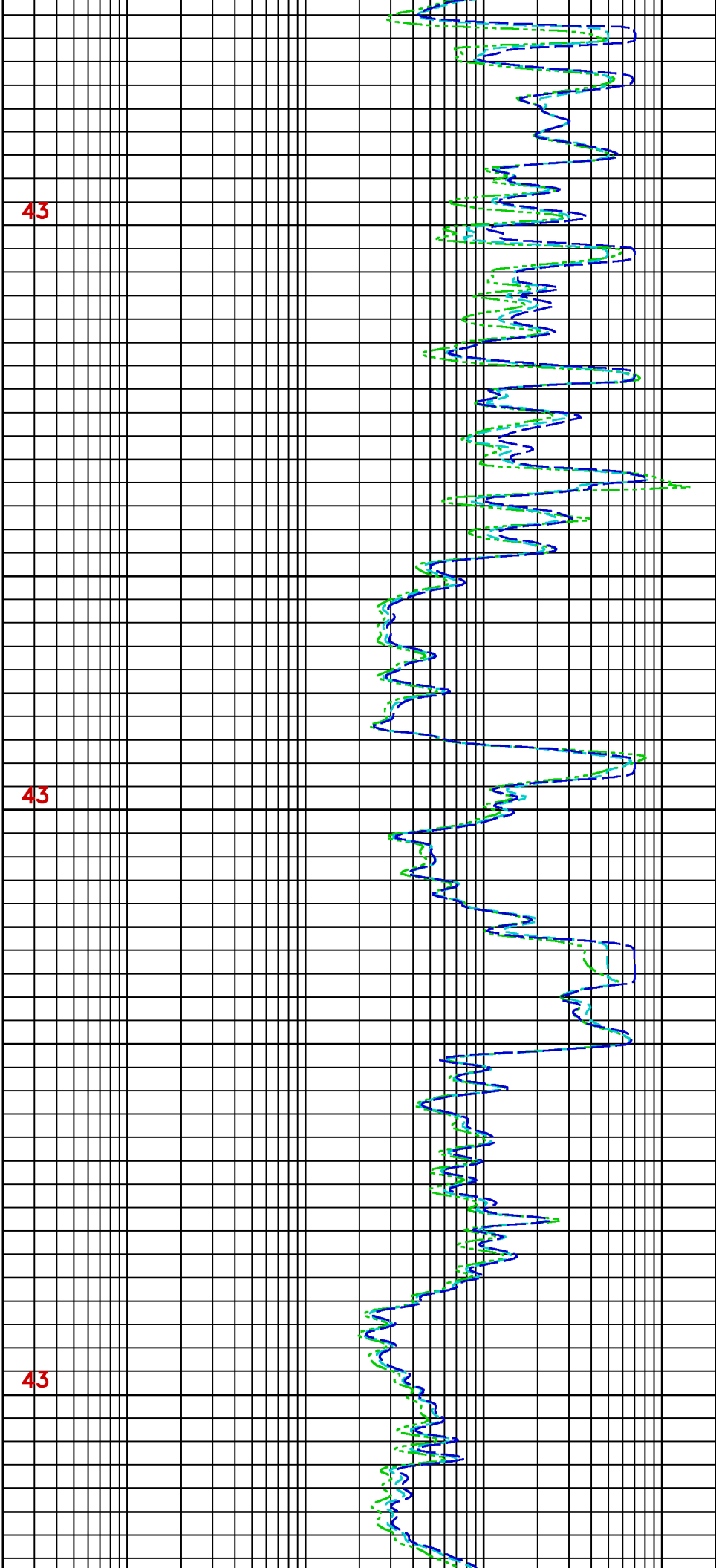


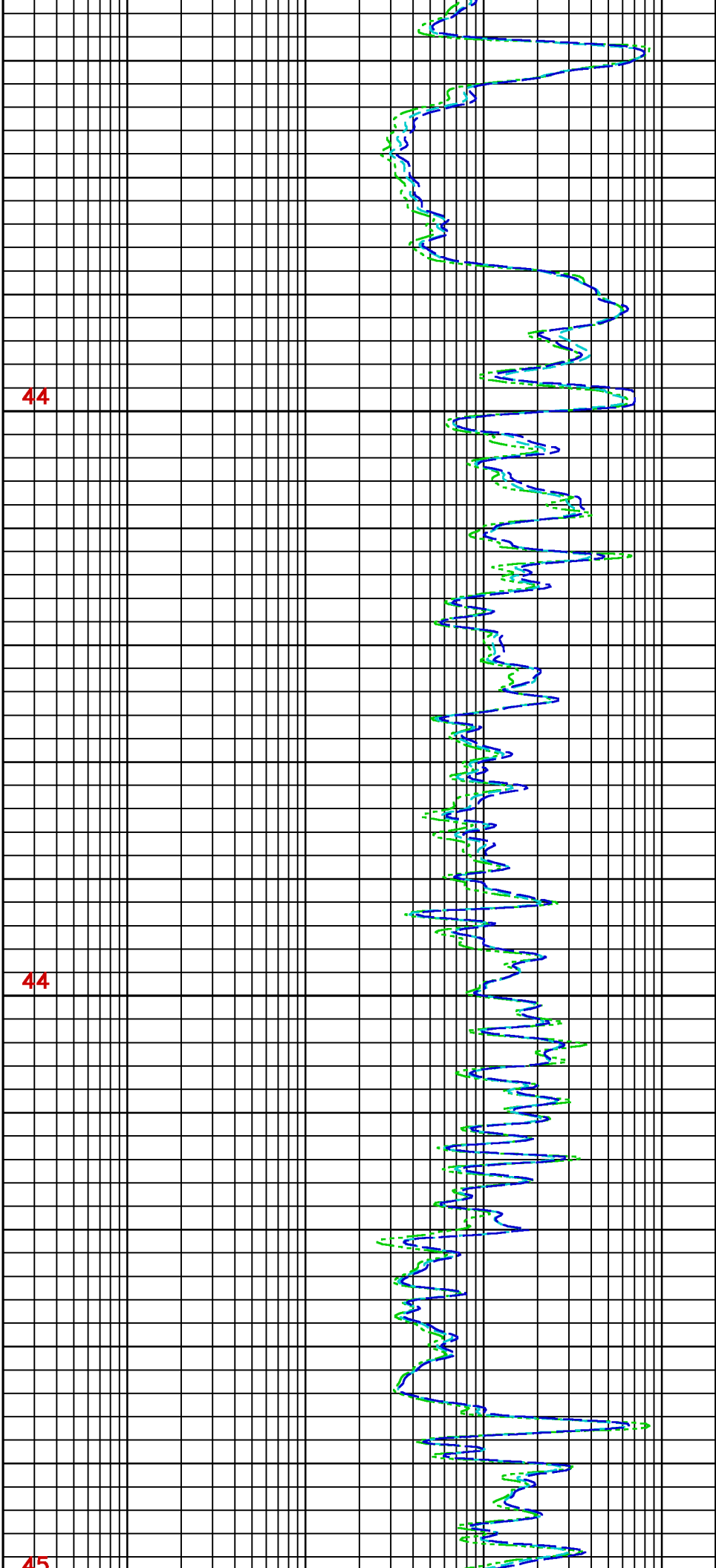
2350

2375





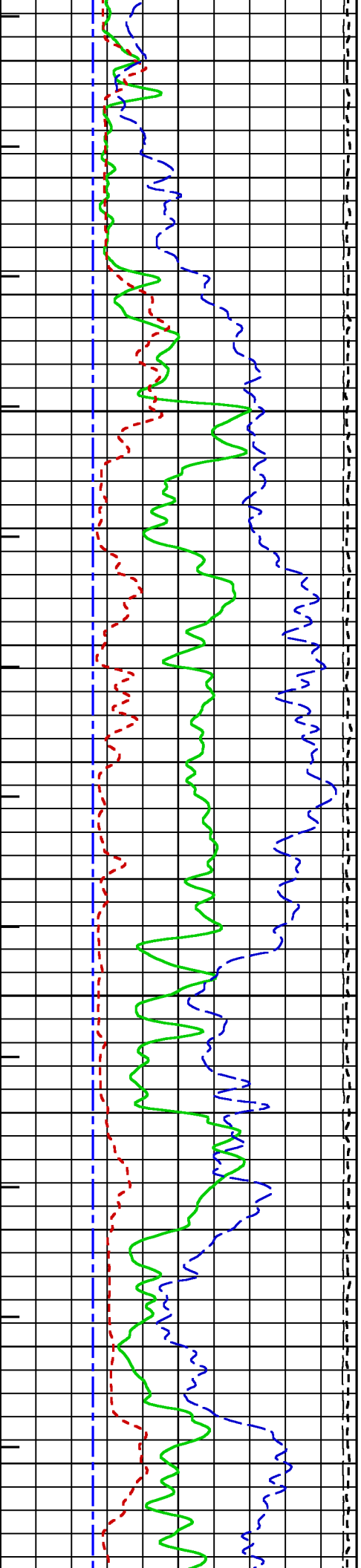


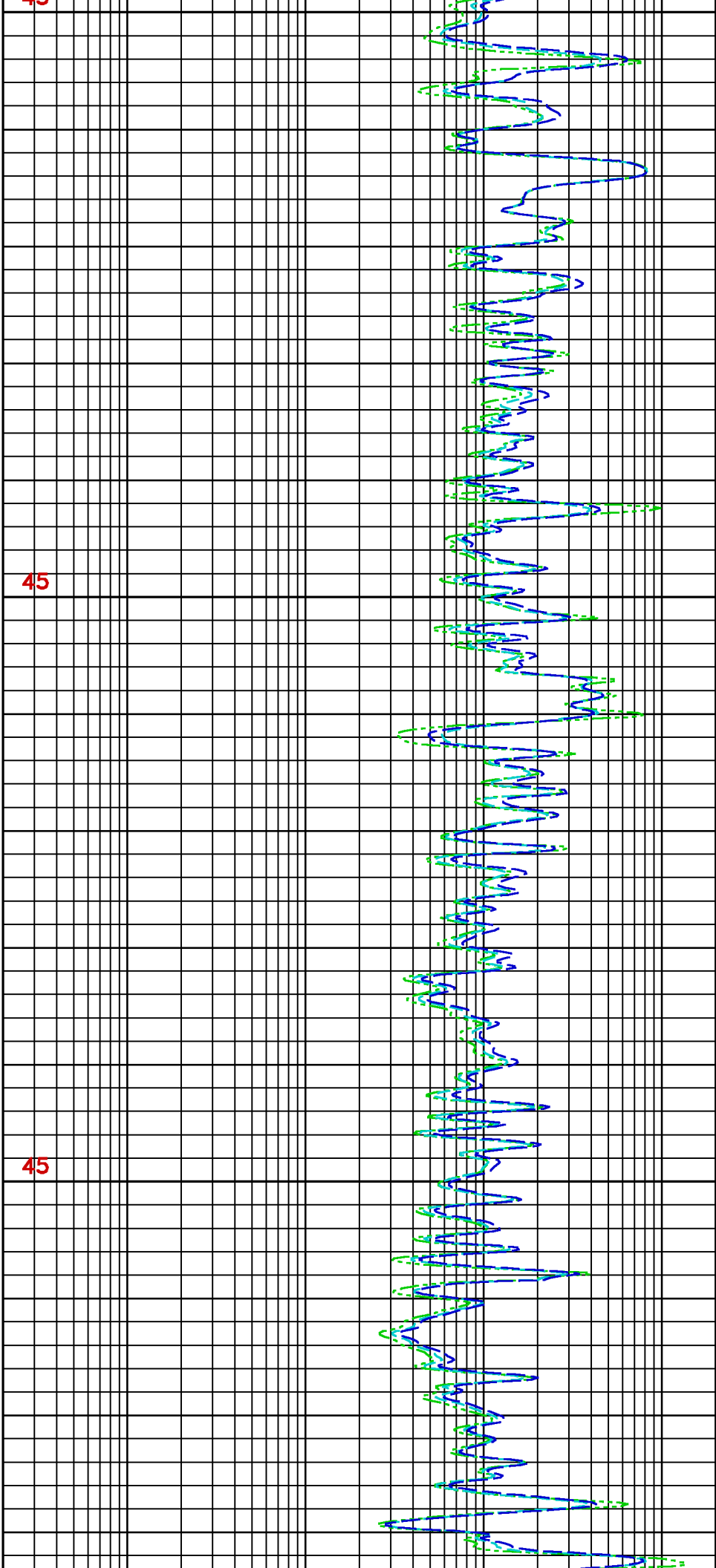


2550

2575

2

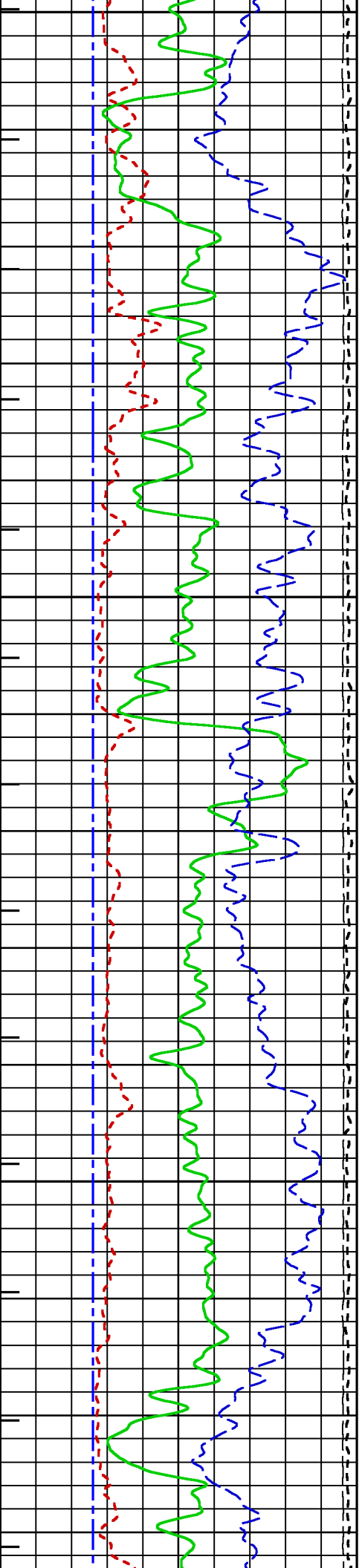


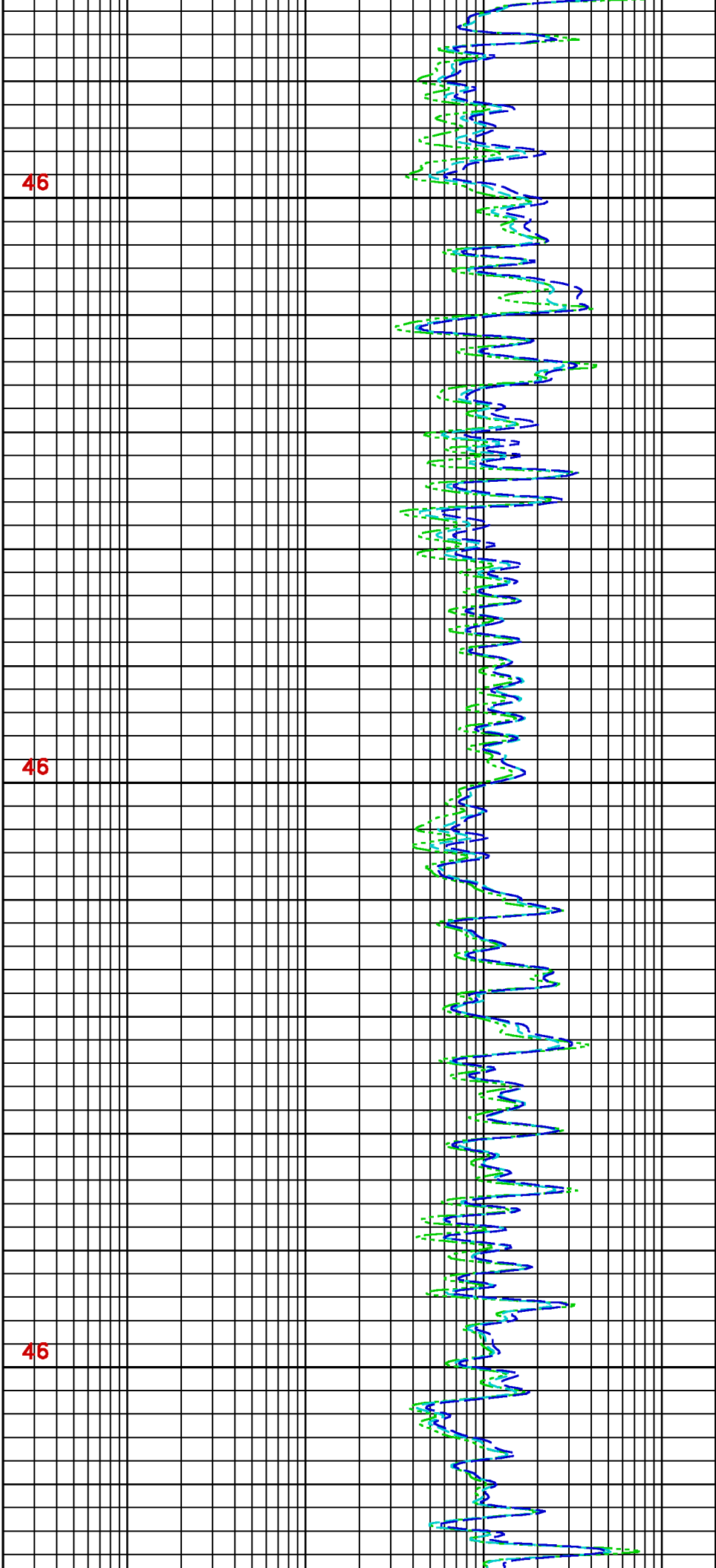


600

2625

2650

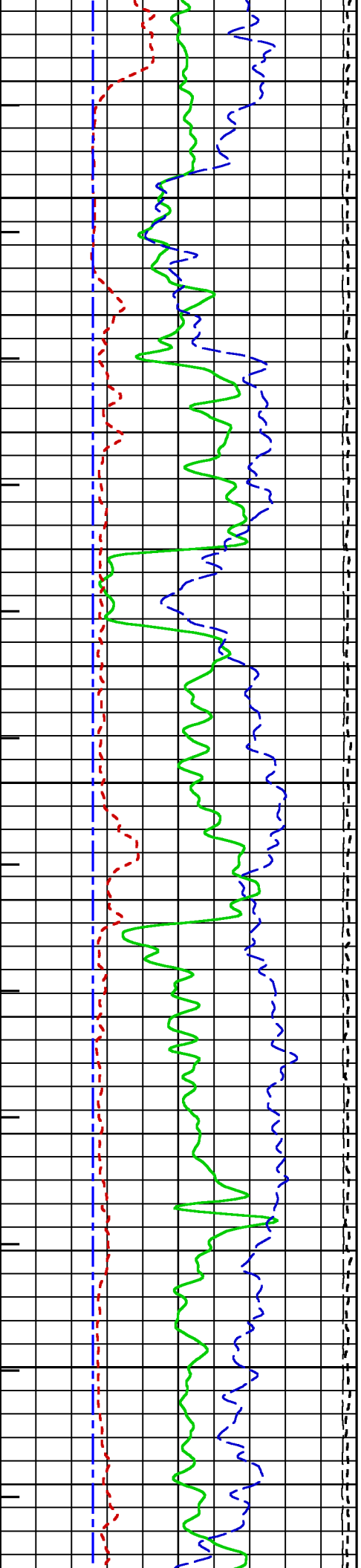


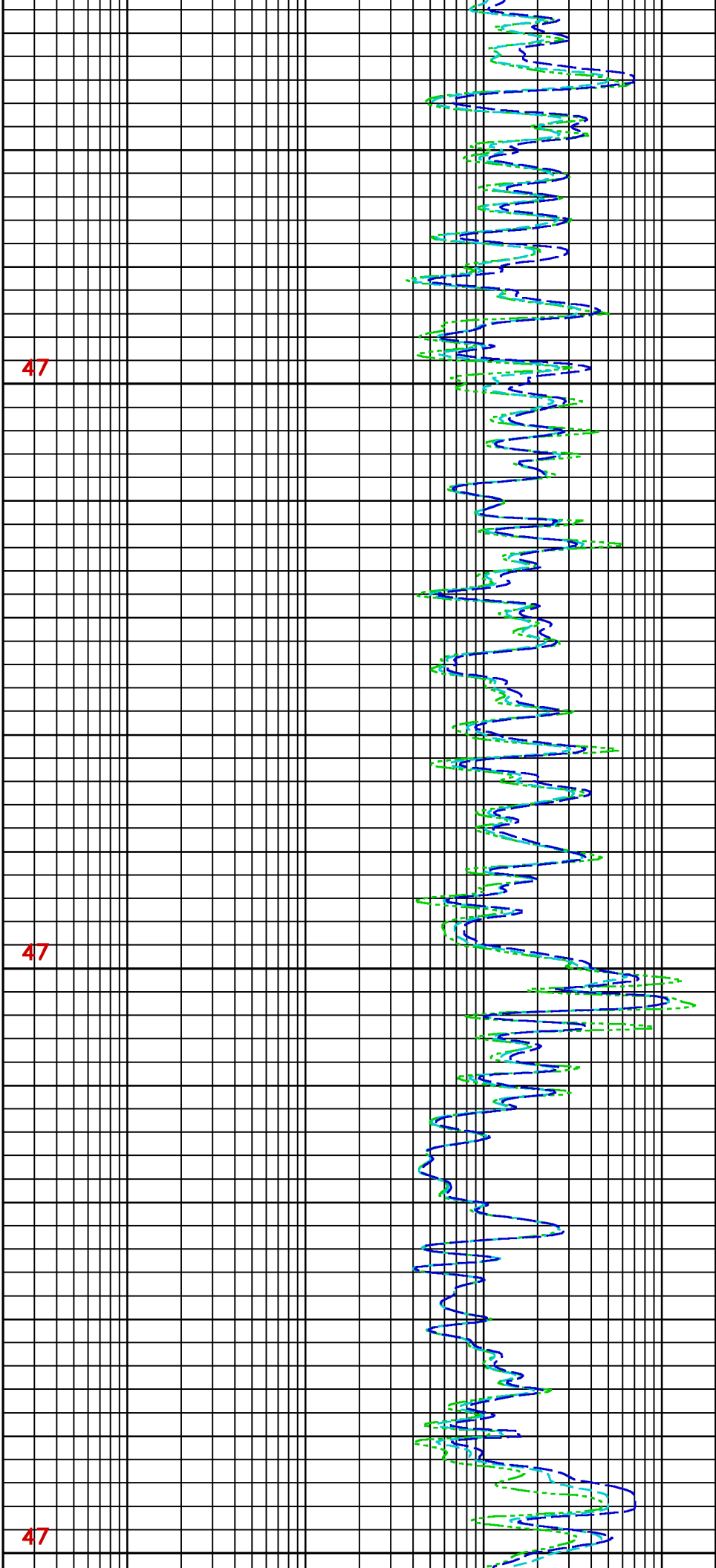


2675

2700

2725

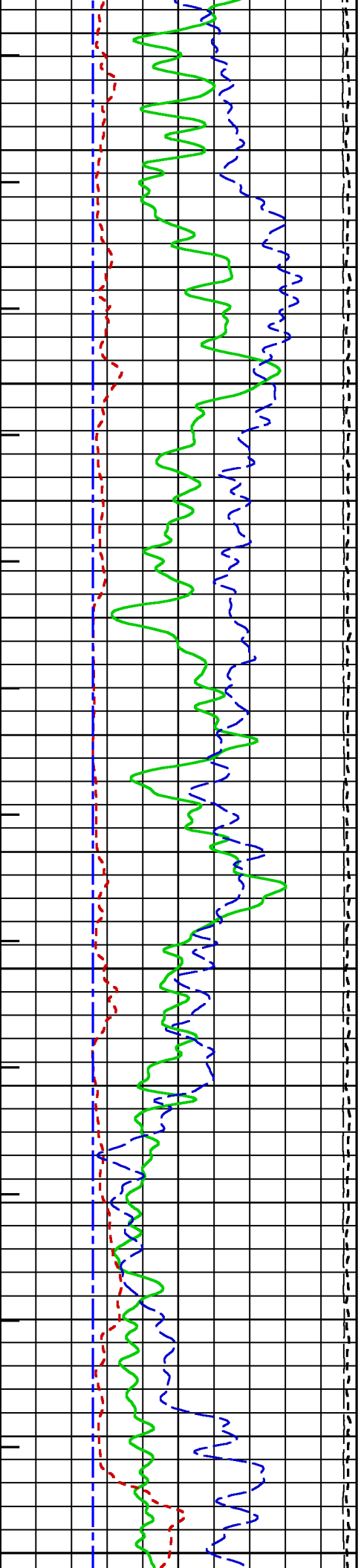


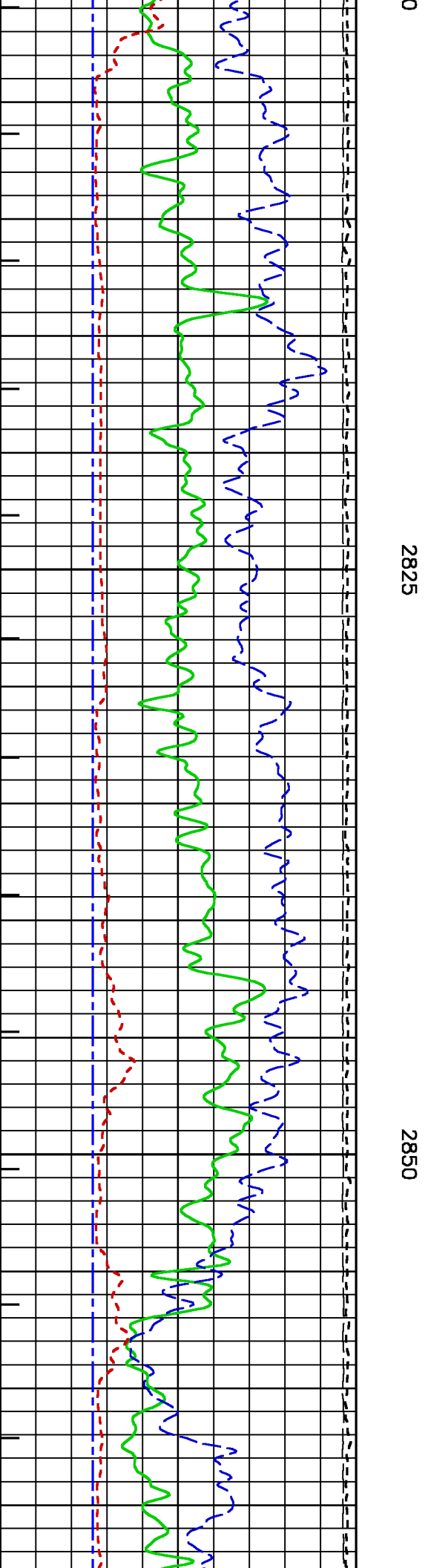
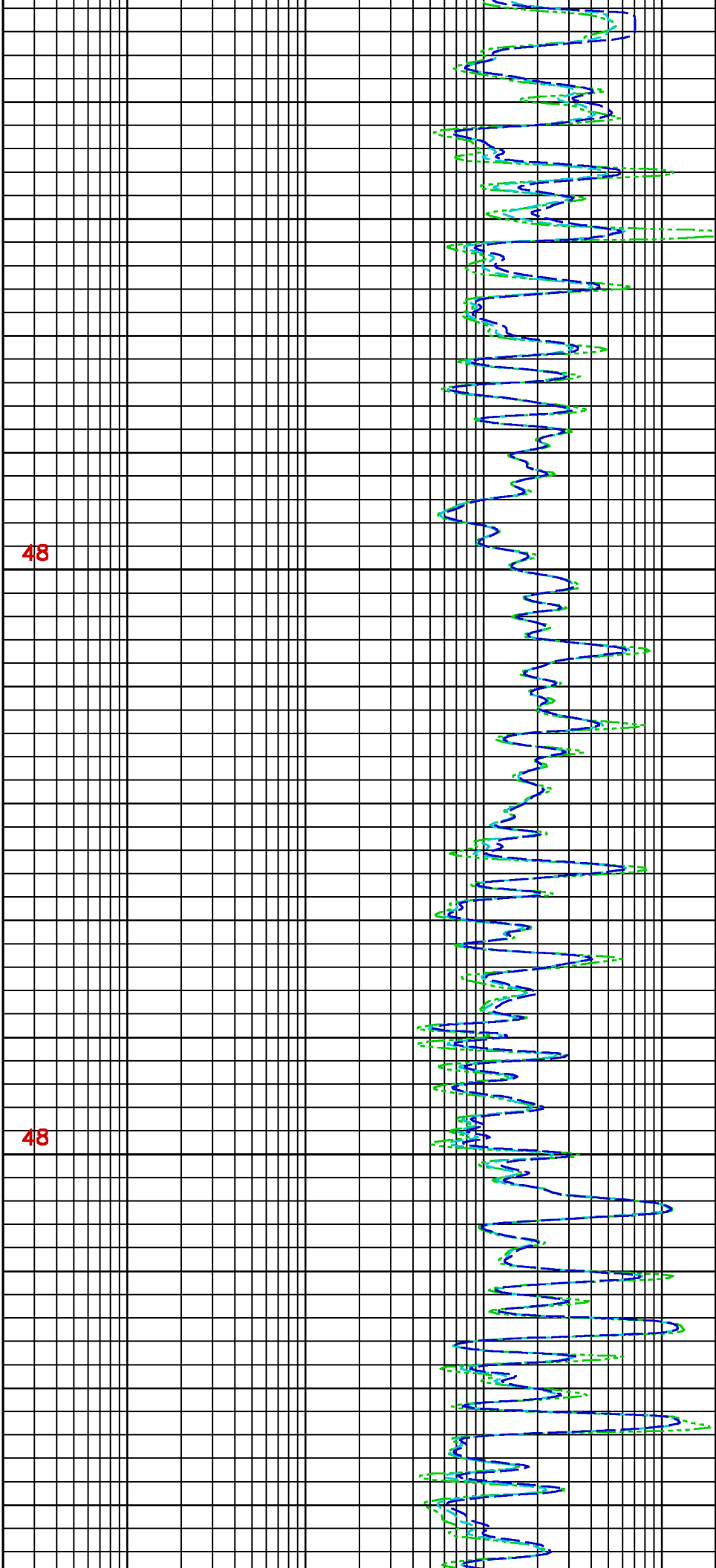


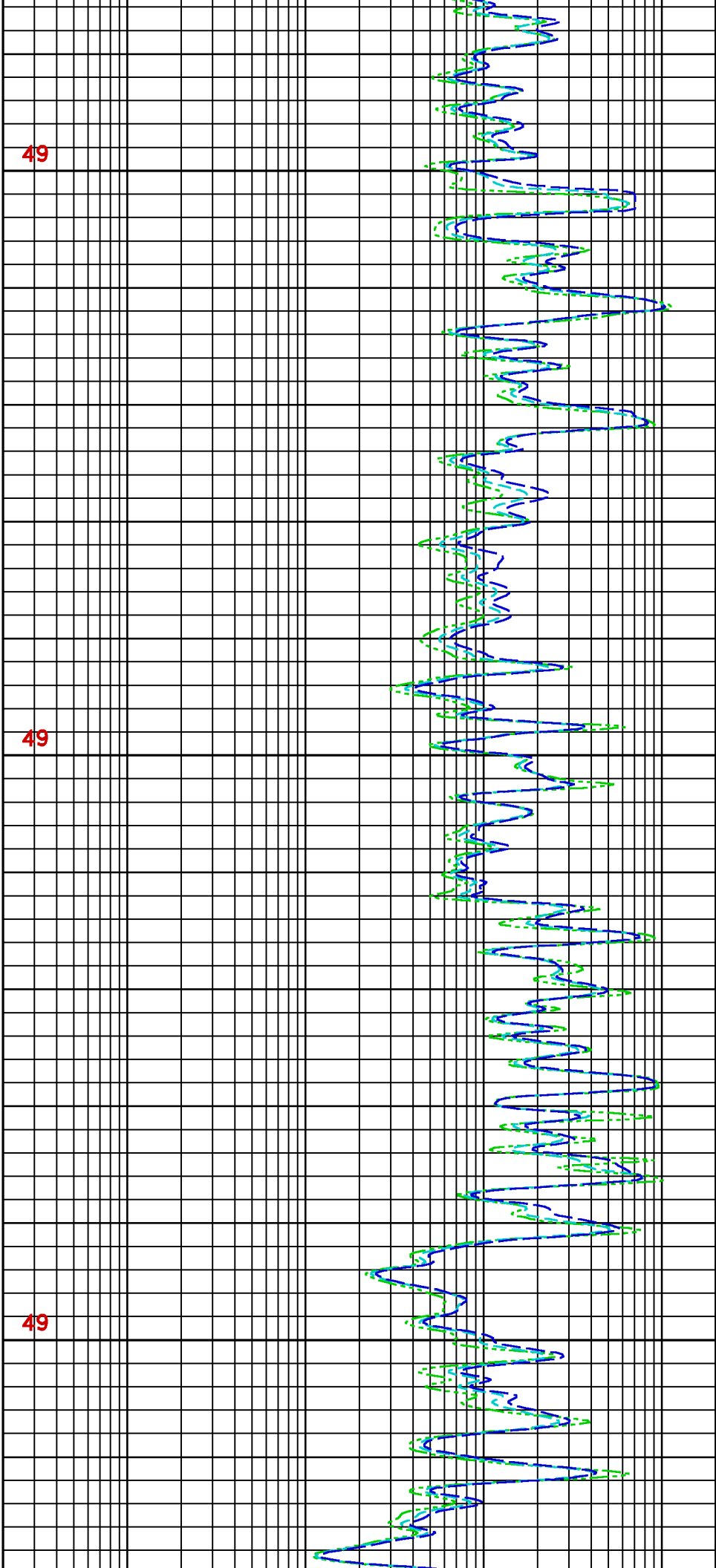
2750

2775

2800



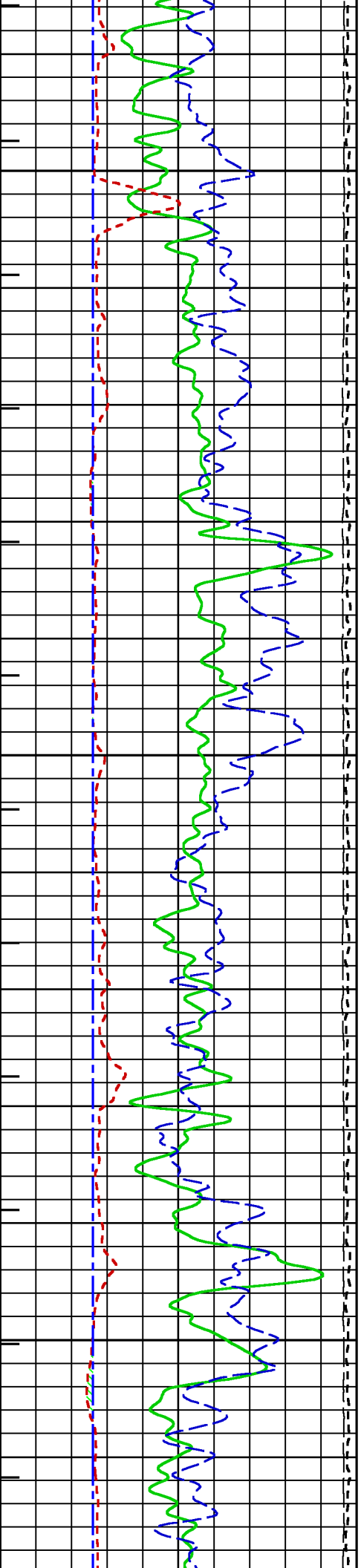


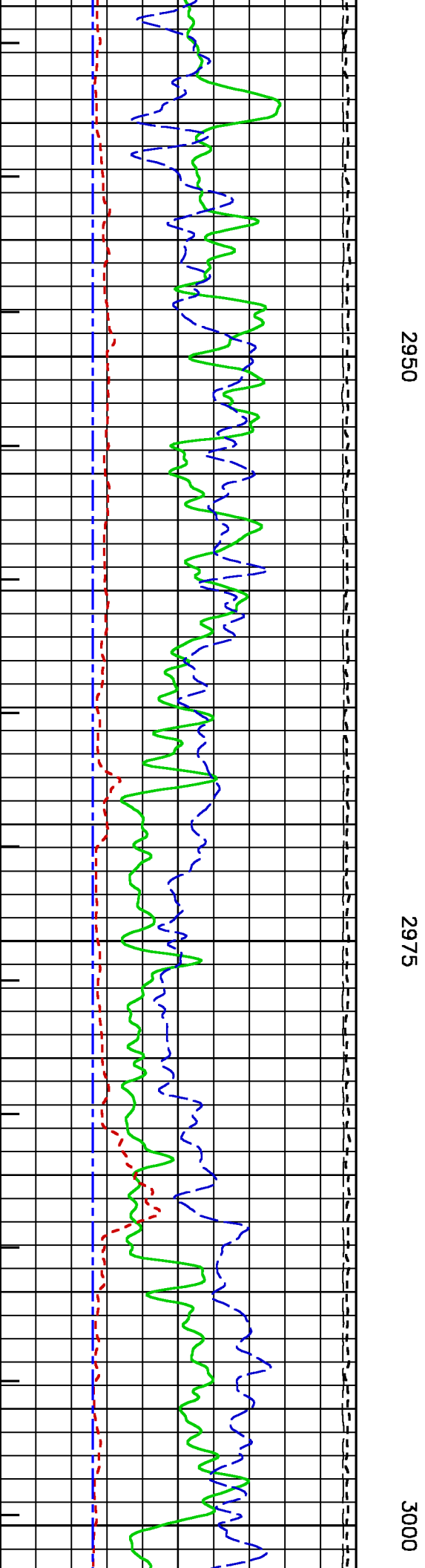
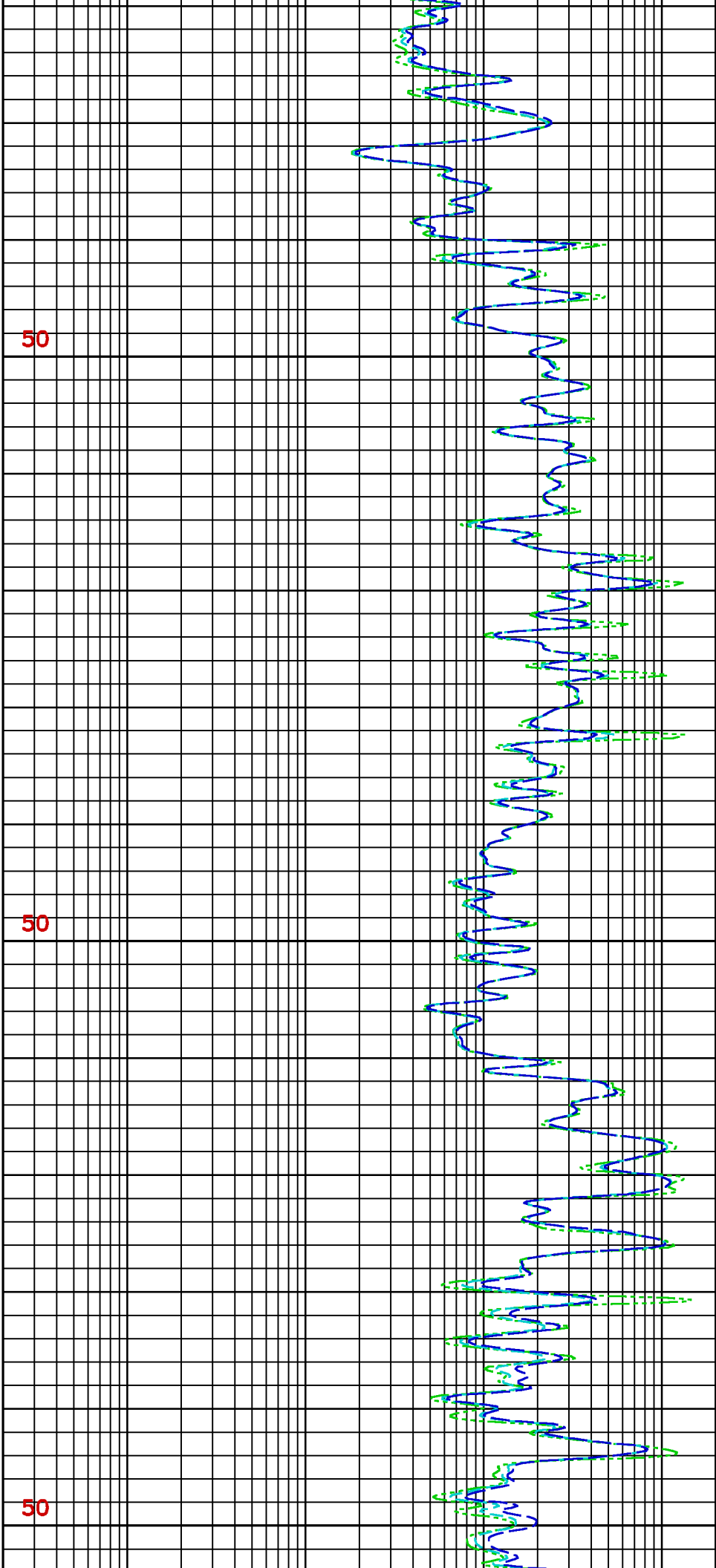


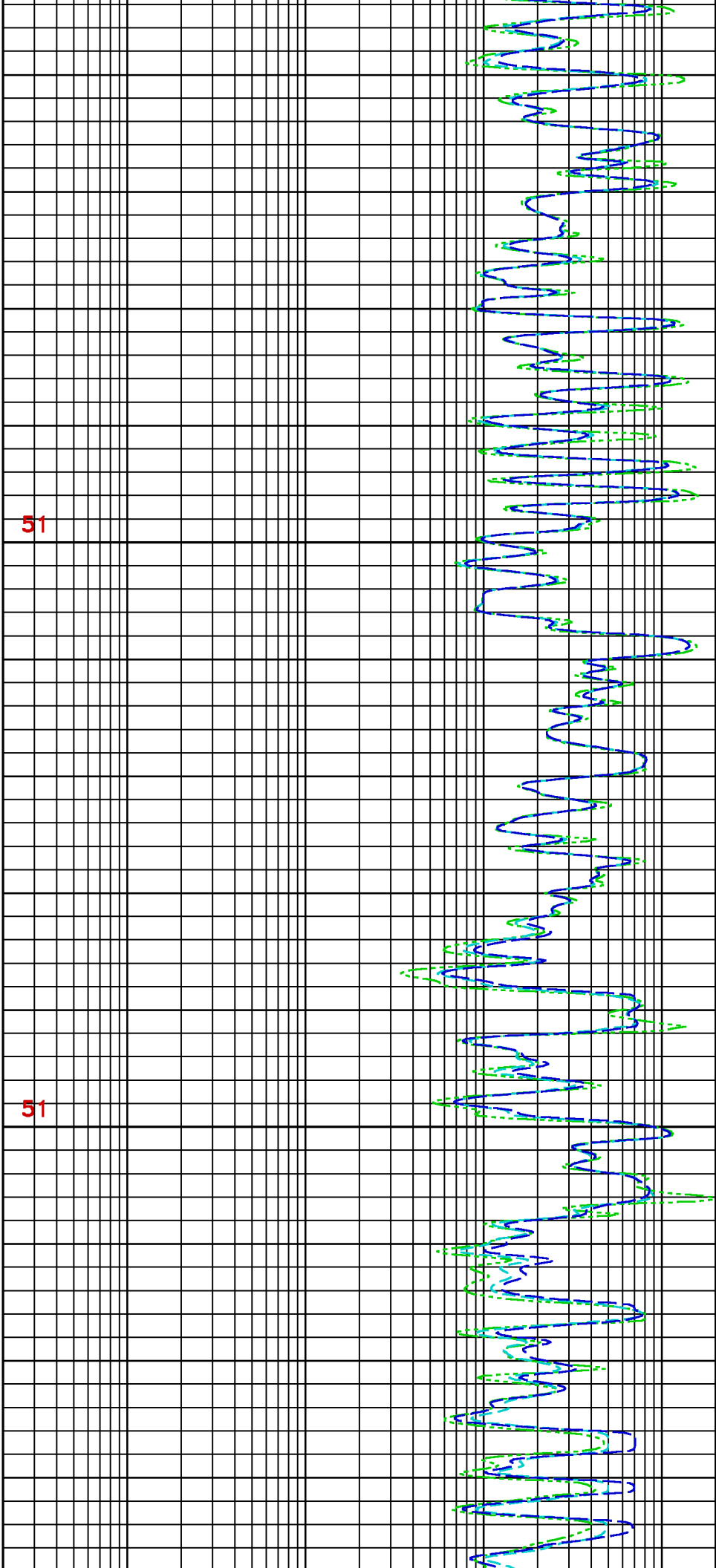
2875

2900

2925

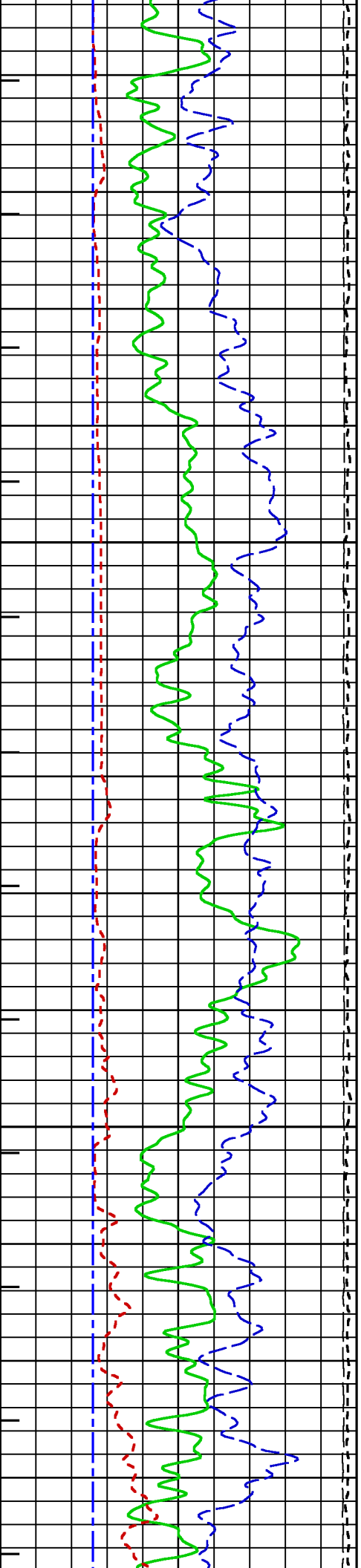


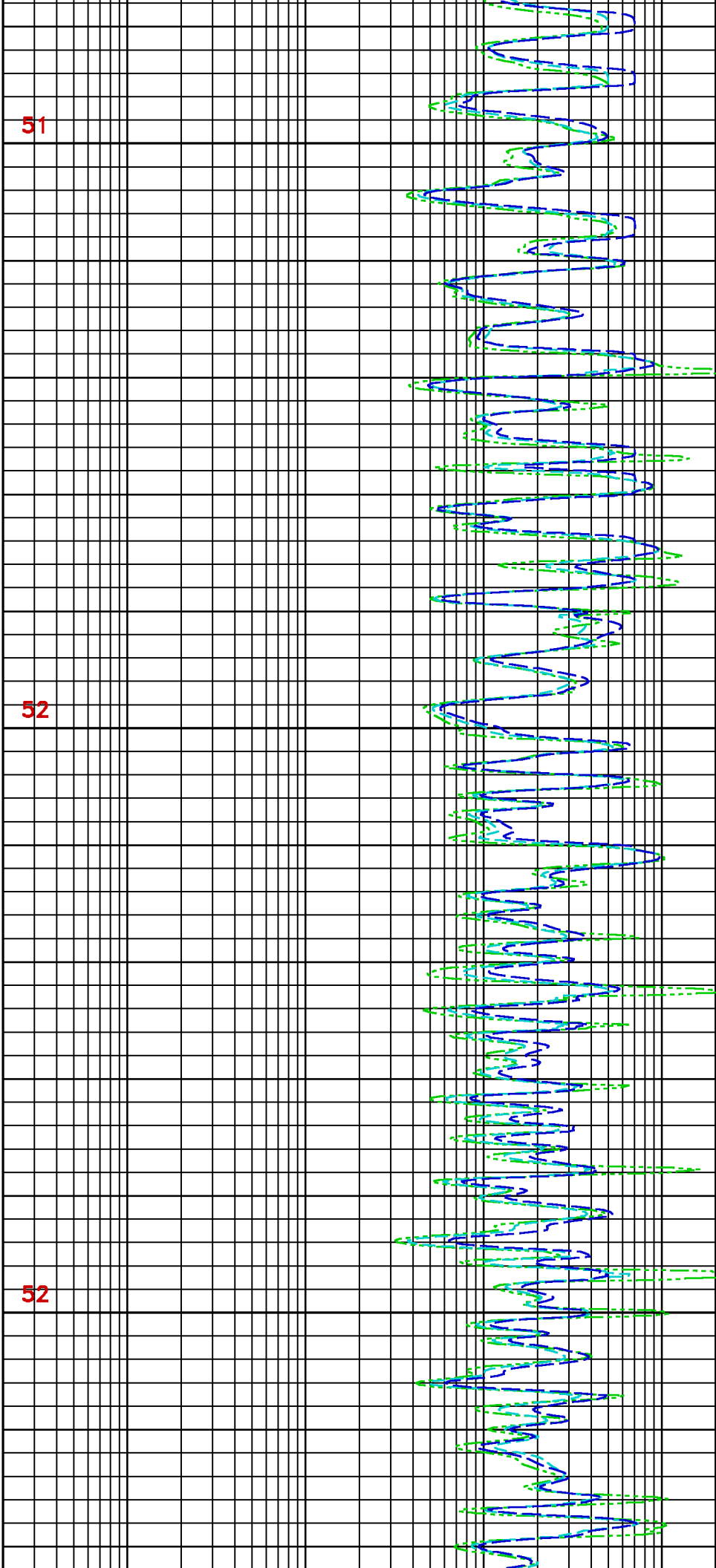




3025

3050

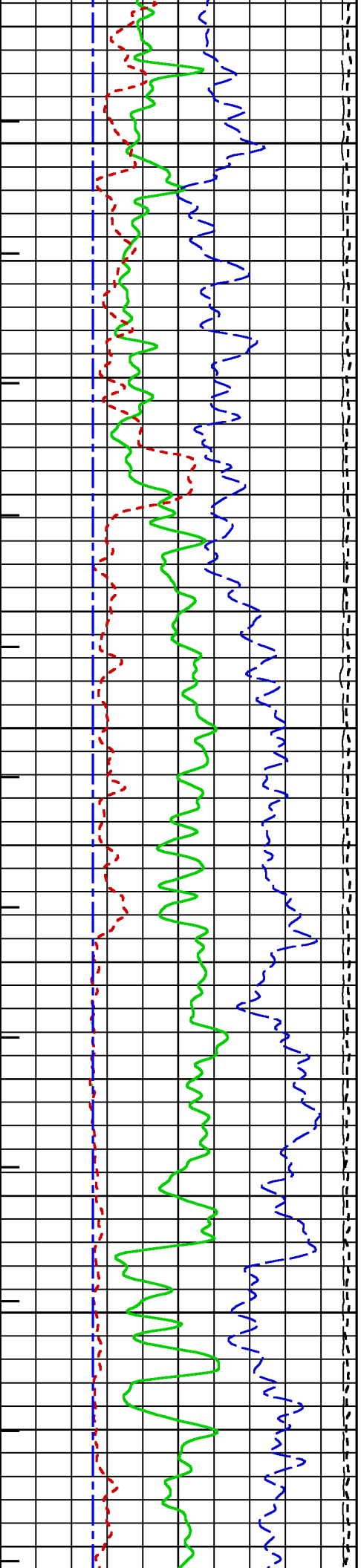


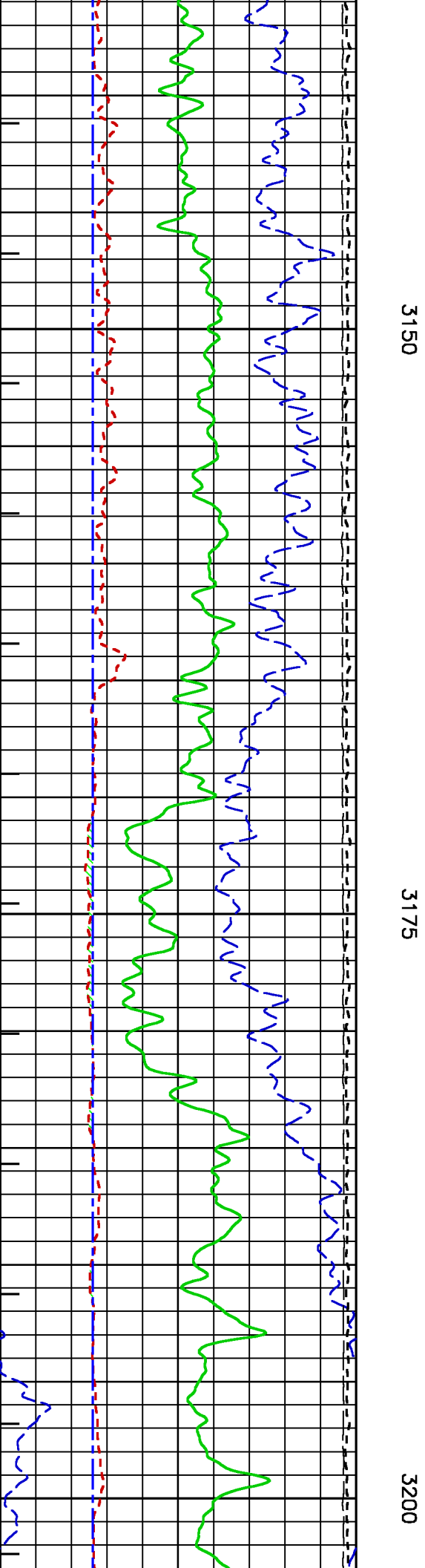
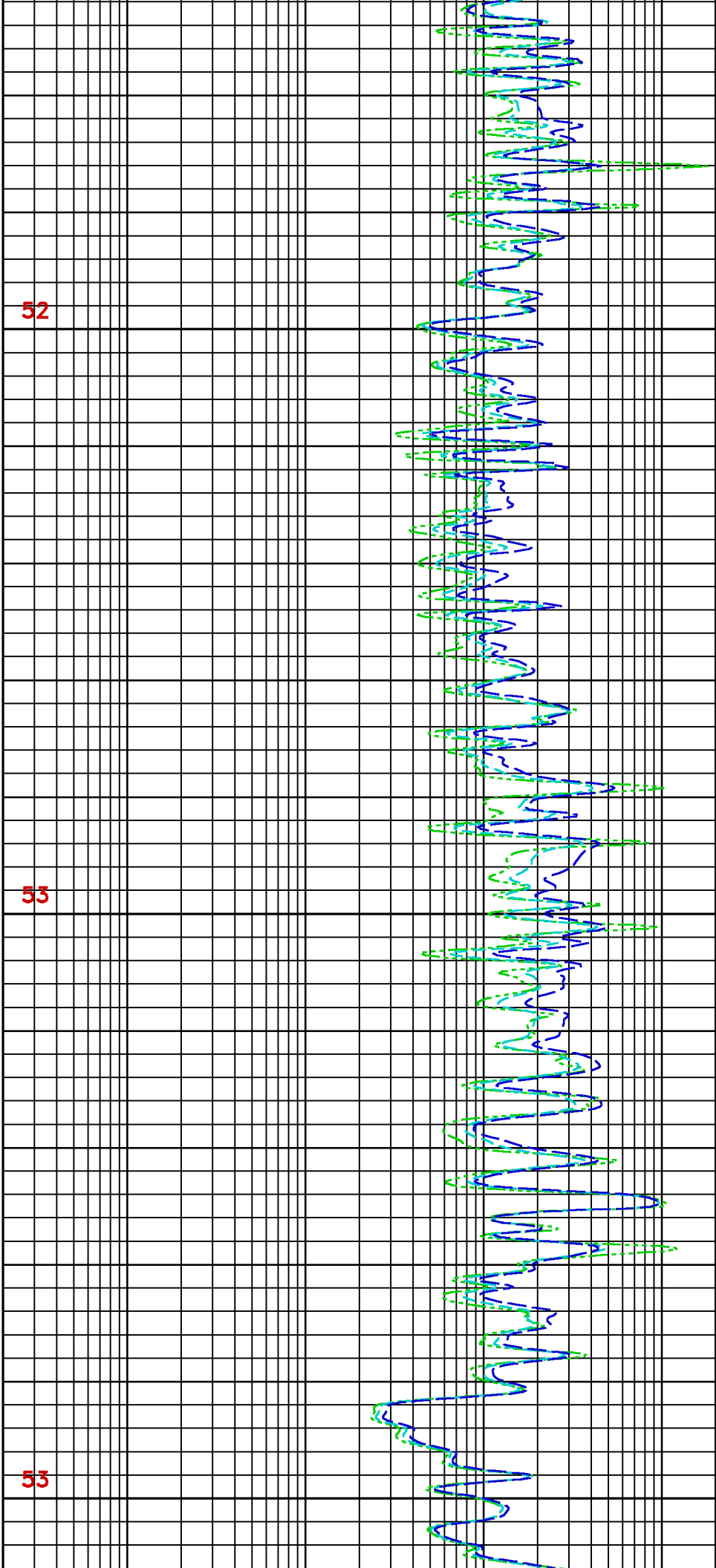


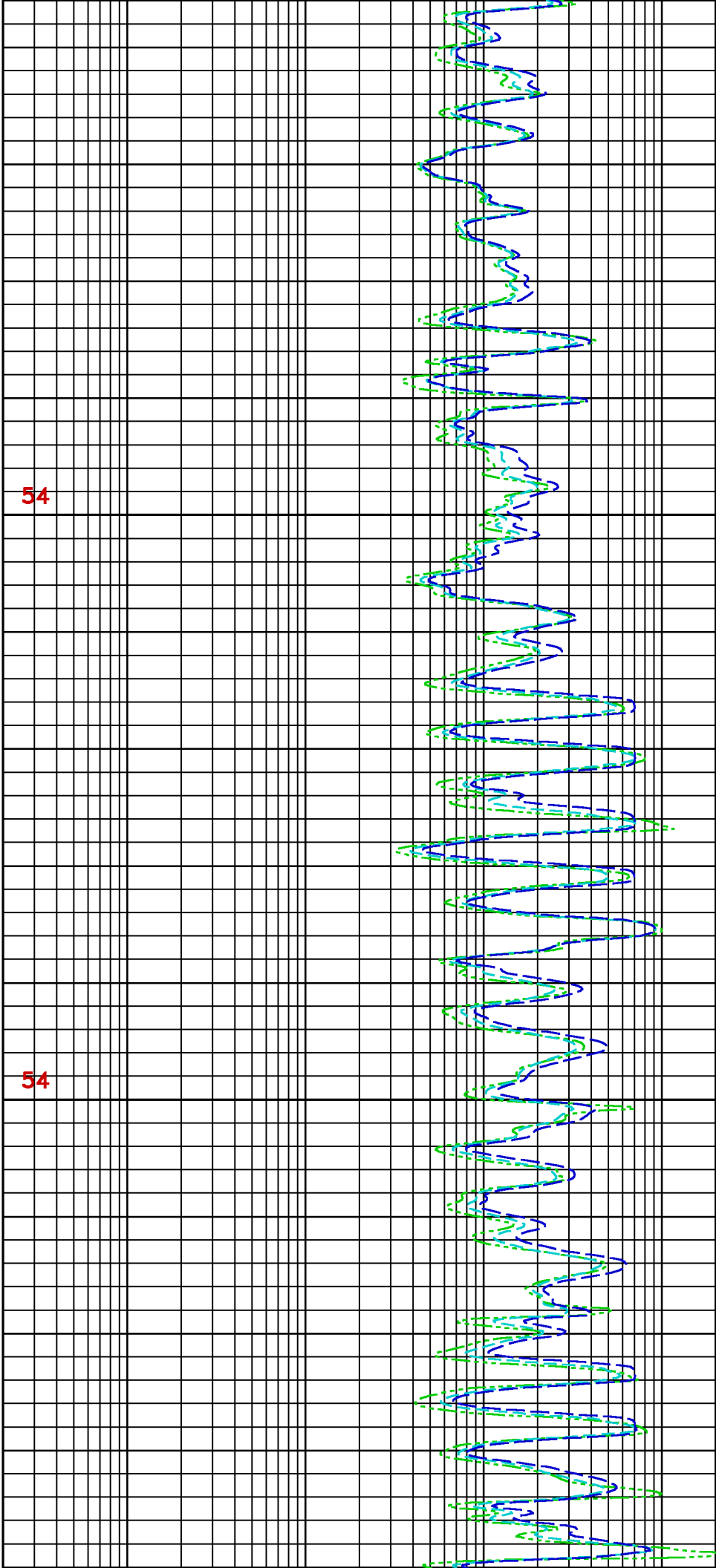
3075

3100

3125

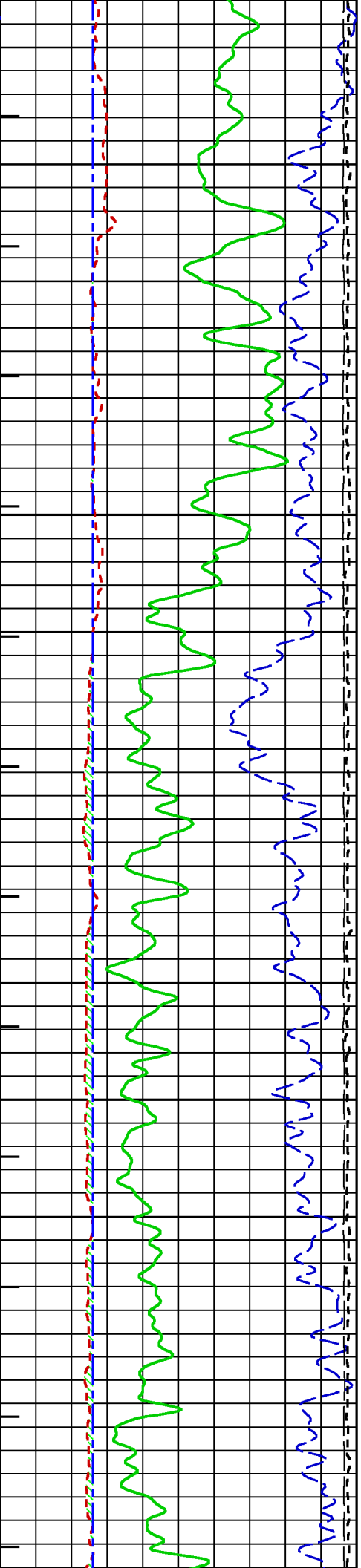


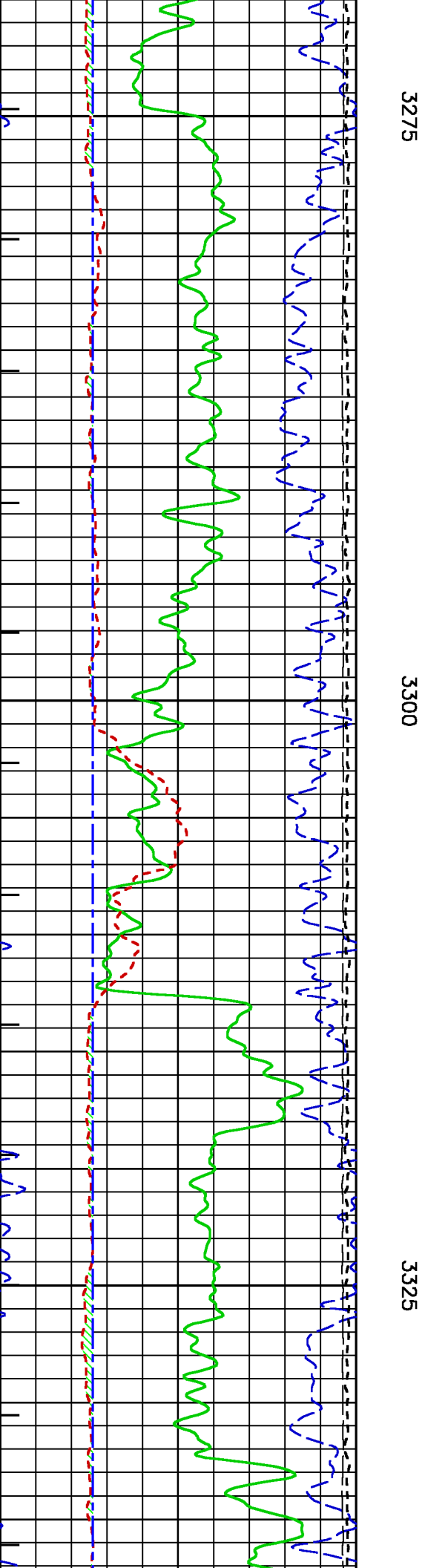
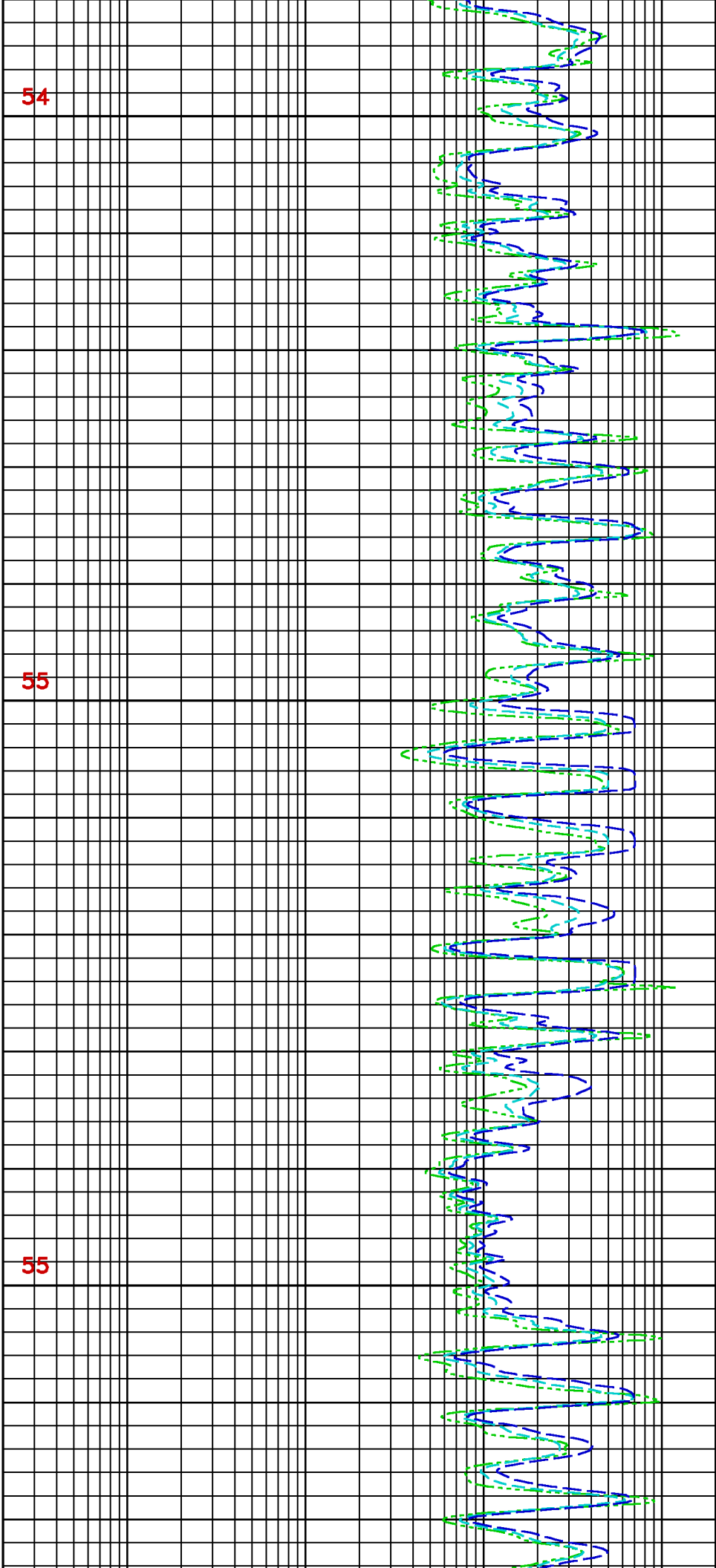


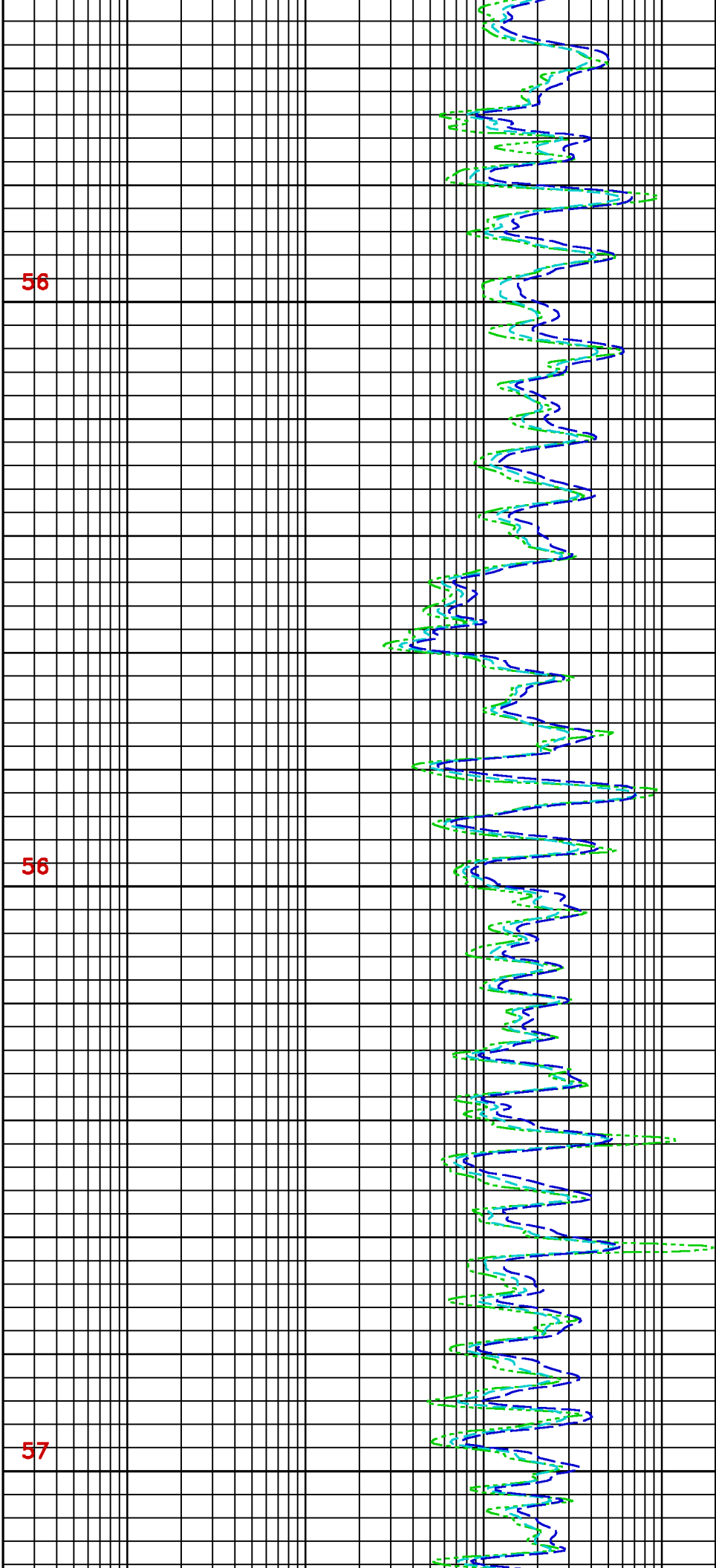


3225

3250



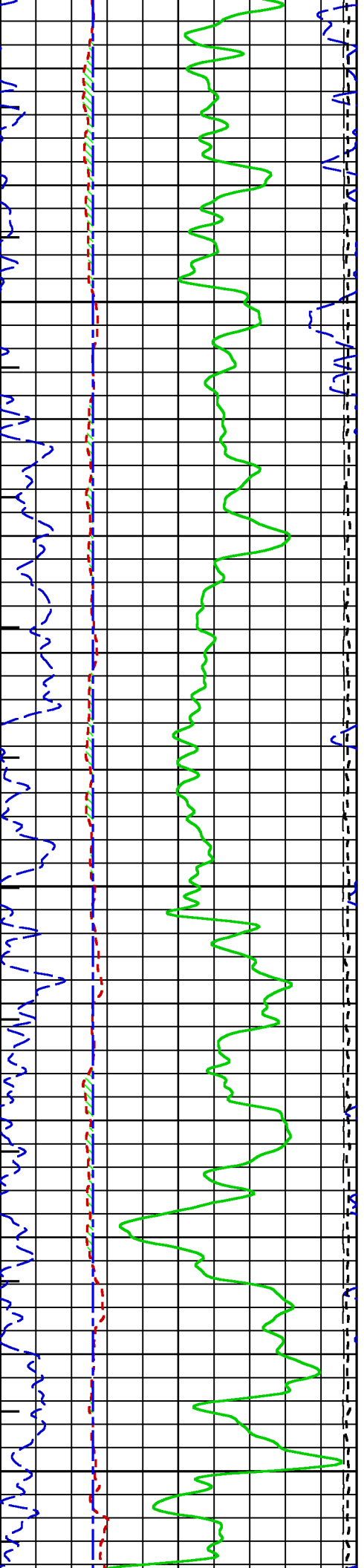


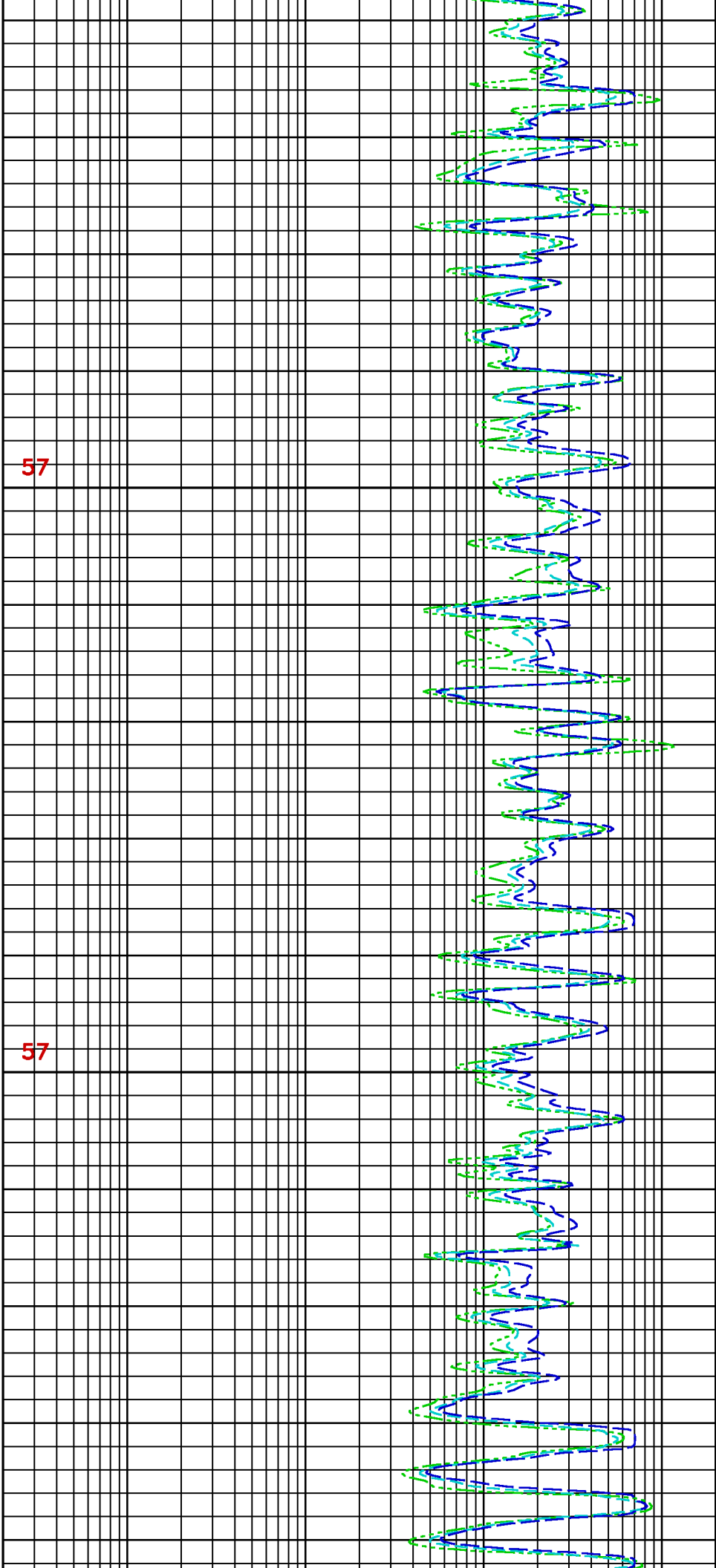


3350

3375

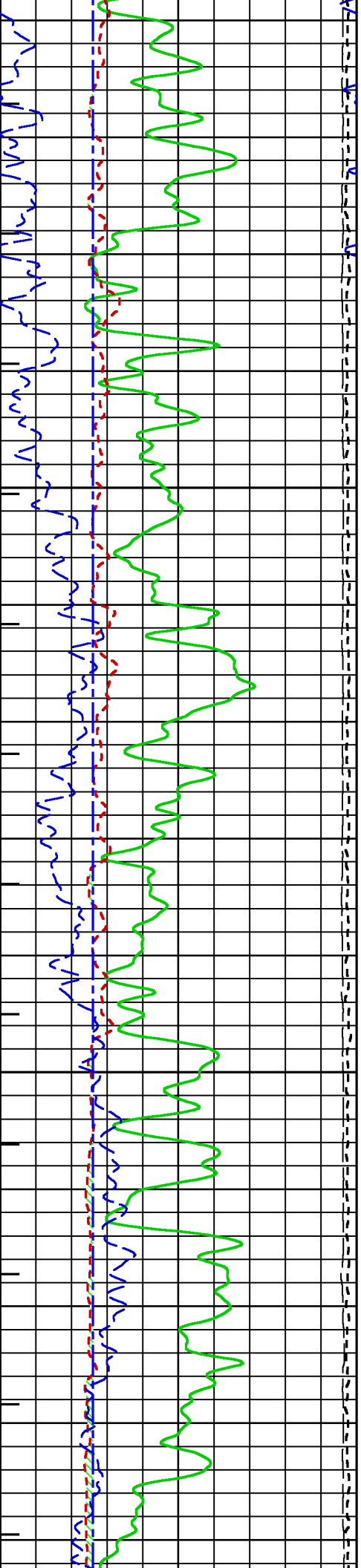
3400

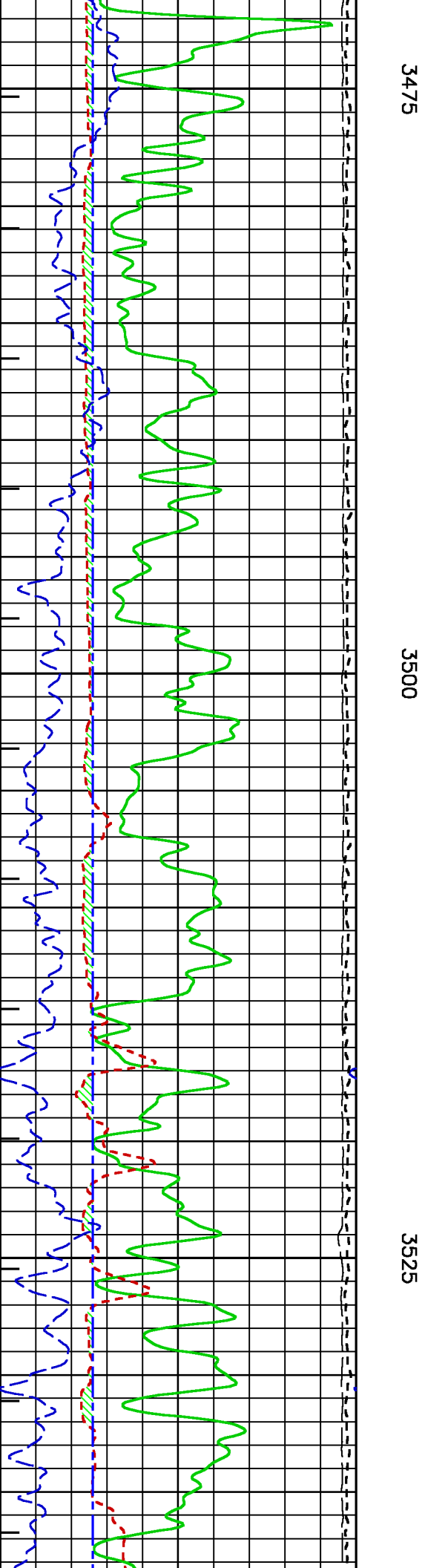
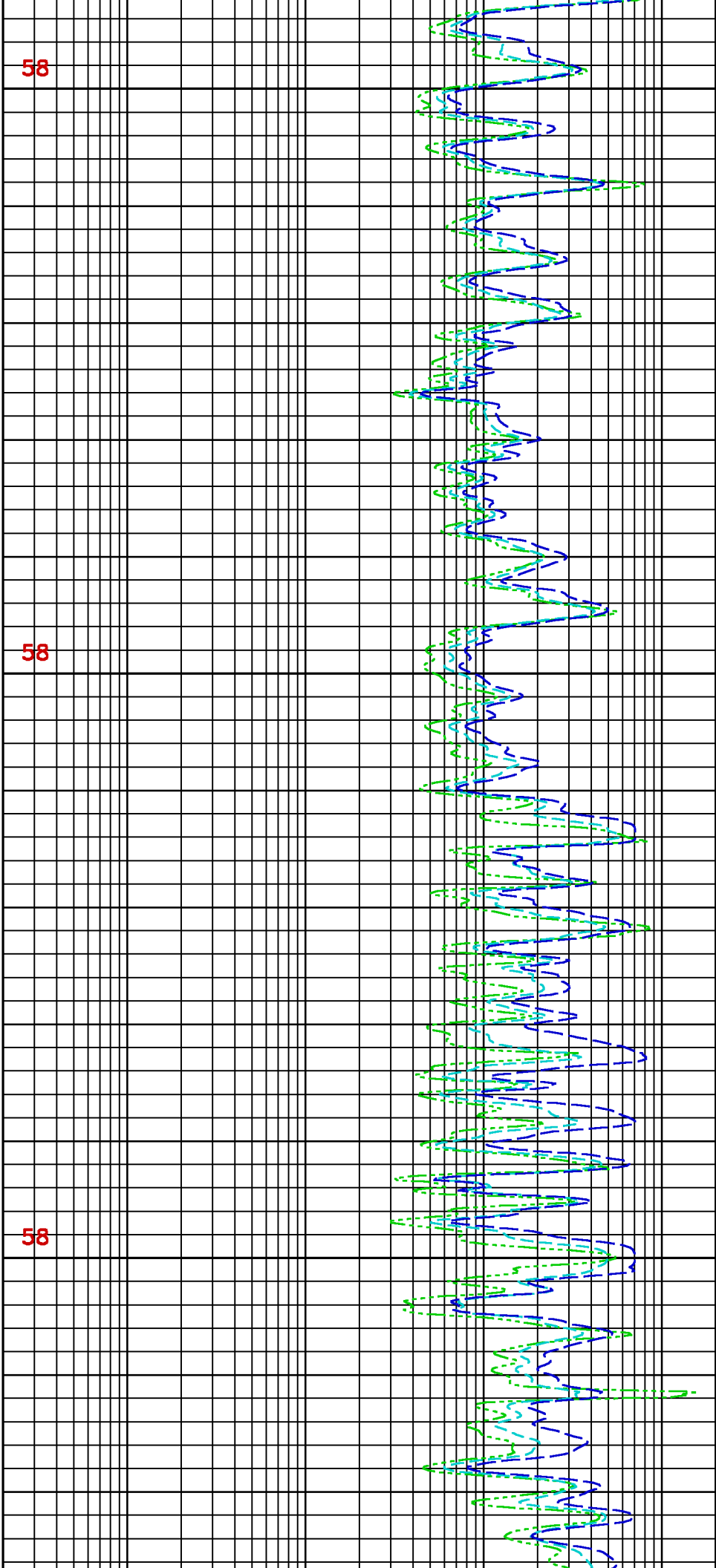


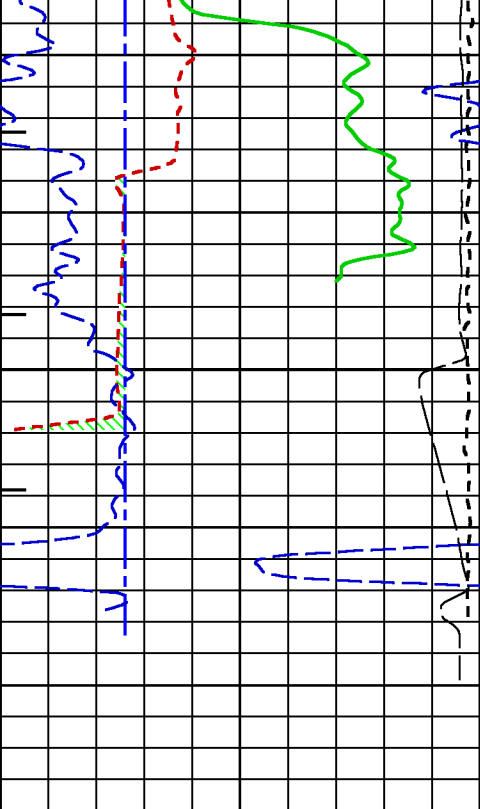


3425

3450







3550

METERS

